



Nek5 rabbit pAb

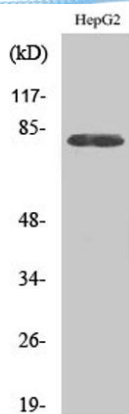
Cat No.:ES2918

For research use only

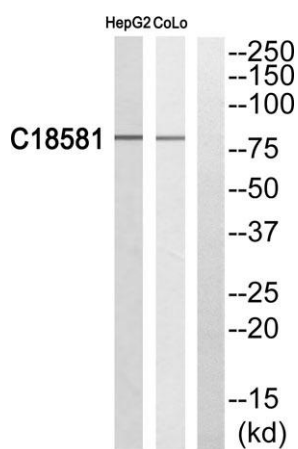
Overview

Product Name	Nek5 rabbit pAb
Host species	Rabbit
Applications	WB;ELISA
Species Cross-Reactivity	Human;Mouse
Recommended dilutions	Western Blot: 1/500 - 1/2000. ELISA: 1/5000. Not yet tested in other applications.
Immunogen	The antiserum was produced against synthesized peptide derived from human NEK5. AA range:160-209
Specificity	Nek5 Polyclonal Antibody detects endogenous levels of Nek5 protein.
Formulation	Liquid in PBS containing 50% glycerol, 0.5% BSA and 0.02% sodium azide.
Storage	Store at -20°C. Avoid repeated freeze-thaw cycles.
Protein Name	Serine/threonine-protein kinase Nek5
Gene Name	NEK5
Cellular localization	
Purification	The antibody was affinity-purified from rabbit antiserum by affinity-chromatography using epitope-specific immunogen.
Clonality	Polyclonal
Concentration	1 mg/ml
Observed band	
Human Gene ID	341676
Human Swiss-Prot Number	Q6P3R8
Alternative Names	NEK5; Serine/threonine-protein kinase Nek5; Never in mitosis A-related kinase 5; Nima-related protein kinase 5
Background	catalytic activity:ATP + a protein = ADP + a phosphoprotein.,cofactor:Magnesium.,similarity:Belongs to the protein kinase superfamily. NEK Ser/Thr protein kinase family. NIMA subfamily.,similarity:Contains 1 protein kinase domain.,





Western Blot analysis of various cells using Nek5 Polyclonal Antibody



Western blot analysis of NEK5 Antibody. The lane on the right is blocked with the NEK5 peptide.

