



NEIL1 rabbit pAb

Cat No.:ES2916

For research use only

Overview

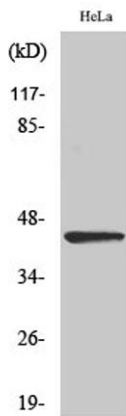
Product Name	NEIL1 rabbit pAb
Host species	Rabbit
Applications	WB;ELISA
Species Cross-Reactivity	Human;Rat;Mouse;
Recommended dilutions	Western Blot: 1/500 - 1/2000. ELISA: 1/20000. Not yet tested in other applications.
Immunogen	The antiserum was produced against synthesized peptide derived from human NEIL1. AA range:291-340
Specificity	NEIL1 Polyclonal Antibody detects endogenous levels of NEIL1 protein.
Formulation	Liquid in PBS containing 50% glycerol, 0.5% BSA and 0.02% sodium azide.
Storage	Store at -20°C. Avoid repeated freeze-thaw cycles.
Protein Name	Endonuclease 8-like 1
Gene Name	NEIL1
Cellular localization	Cytoplasm, cytoskeleton, microtubule organizing center, centrosome . Nucleus . Chromosome . During mitosis, associates with centrosomes and condensed chromatin.
Purification	The antibody was affinity-purified from rabbit antiserum by affinity-chromatography using epitope-specific immunogen.
Clonality	Polyclonal
Concentration	1 mg/ml
Observed band	44kD
Human Gene ID	79661
Human Swiss-Prot Number	Q96FI4
Alternative Names	NEIL1; Endonuclease 8-like 1; DNA glycosylase/AP lyase Neil1; DNA-(apurinic or apyrimidinic site) lyase Neil1; Endonuclease VIII-like 1; FPG1; Nei homolog 1; NEH1; Nei-like protein 1
Background	This gene is a member of the Nei endonuclease



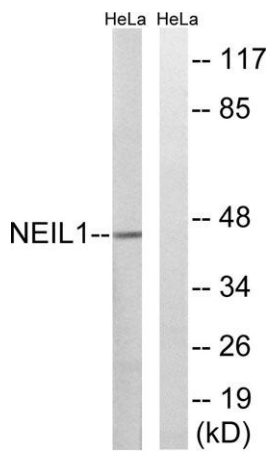


VIII-like gene family which encodes DNA glycosylases. The encoded enzyme participates in the DNA repair pathway by initiating base excision repair by removing damaged bases, primarily oxidized pyrimidines. Multiple transcript variants encoding different isoforms have been found for this gene. [provided by RefSeq, Feb 2012],

Western Blot analysis of various cells using NEIL1 Polyclonal Antibody



Western blot analysis of lysates from HeLa cells, using NEIL1 Antibody. The lane on the right is blocked with the synthesized peptide.



Western blot analysis of the lysates from HeLa cells using NEIL1 antibody.

