



NEEP21 rabbit pAb

Cat No.:ES2914

For research use only

Overview

Product Name	NEEP21 rabbit pAb
Host species	Rabbit
Applications	WB;IHC;IF;ELISA
Species Cross-Reactivity	Human;Mouse;Rat
Recommended dilutions	Western Blot: 1/500 - 1/2000. Immunohistochemistry: 1/100 - 1/300. ELISA: 1/20000. Not yet tested in other applications.
Immunogen	The antiserum was produced against synthesized peptide derived from human NSG1. AA range:112-161
Specificity	NEEP21 Polyclonal Antibody detects endogenous levels of NEEP21 protein.
Formulation	Liquid in PBS containing 50% glycerol, 0.5% BSA and 0.02% sodium azide.
Storage	Store at -20°C. Avoid repeated freeze-thaw cycles.
Protein Name	Neuron-specific protein family member 1
Gene Name	NSG1
Cellular localization	Membrane ; Single-pass type II membrane protein . Golgi apparatus, trans-Golgi network membrane . Endosome membrane . Cell projection, dendrite . Early endosome membrane . Late endosome membrane . Lysosome lumen . Recycling endosome membrane . Cytoplasmic vesicle membrane . Golgi apparatus, Golgi stack membrane . Endosome, multivesicular body membrane . Endoplasmic reticulum membrane . Endocytosed from the cell surface, thus enters into early endosomes, trafficks to late endosomes and degradates in lysosomes (By similarity). Endoplasmic reticulum targeting is essential for apoptosis (PubMed:20599942). Found in both stationary and motile endosomes. A previous study supports a type I membrane protein topology. .





Purification

The antibody was affinity-purified from rabbit antiserum by affinity-chromatography using epitope-specific immunogen.

Clonality

Polyclonal

Concentration

1 mg/ml

Observed band

26kD

Human Gene ID

27065

Human Swiss-Prot Number

P42857

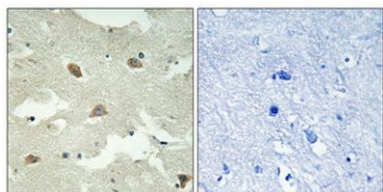
Alternative Names

NSG1; D4S234; Neuron-specific protein family member 1; Brain neuron cytoplasmic protein 1
similarity:Belongs to the NSG family,.

Background



Western Blot analysis of various cells using NEEP21 Polyclonal Antibody diluted at 1:2000

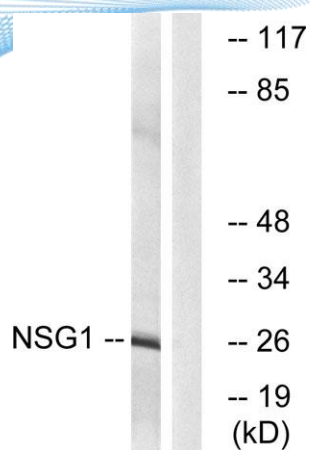


Immunohistochemical analysis of paraffin-embedded Human brain. Antibody was diluted at 1:100(4° overnight). High-pressure and temperature Tris-EDTA,pH8.0 was used for antigen retrieval. Negative contrl (right) obtained from antibody was pre-absorbed by immunogen peptide.

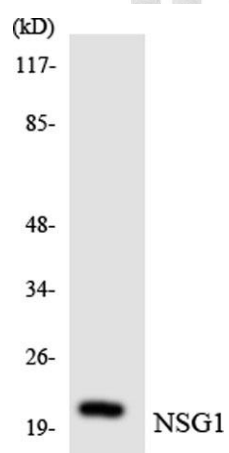




ELK Biotechnology



Western blot analysis of lysates from COLO cells, using NSG1 Antibody. The lane on the right is blocked with the synthesized peptide.



Western blot analysis of the lysates from K562 cells using NSG1 antibody.



+86-27-59760950

ELKbio@ELKbiotech.com

www.elkbiotech.com

23-2, No.388 Gaoxin 2nd Road,Wuhan East Lake Hi-tech Development Zone, Hubei , P.R.C