



NDUFA8 rabbit pAb

Cat No.:ES2908

For research use only

Overview

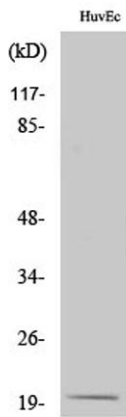
Product Name	NDUFA8 rabbit pAb
Host species	Rabbit
Applications	WB;IHC;IF;ELISA
Species Cross-Reactivity	Human;Mouse
Recommended dilutions	Western Blot: 1/500 - 1/2000. Immunohistochemistry: 1/100 - 1/300. ELISA: 1/40000. Not yet tested in other applications.
Immunogen	The antiserum was produced against synthesized peptide derived from human NDUFA8. AA range:109-158
Specificity	NDUFA8 Polyclonal Antibody detects endogenous levels of NDUFA8 protein.
Formulation	Liquid in PBS containing 50% glycerol, 0.5% BSA and 0.02% sodium azide.
Storage	Store at -20°C. Avoid repeated freeze-thaw cycles.
Protein Name	NADH dehydrogenase [ubiquinone] 1 alpha subcomplex subunit 8
Gene Name	NDUFA8
Cellular localization	Mitochondrion inner membrane ; Peripheral membrane protein . Mitochondrion intermembrane space . Mitochondrion .
Purification	The antibody was affinity-purified from rabbit antiserum by affinity-chromatography using epitope-specific immunogen.
Clonality	Polyclonal
Concentration	1 mg/ml
Observed band	22kD
Human Gene ID	4702
Human Swiss-Prot Number	P51970
Alternative Names	NDUFA8; NADH dehydrogenase [ubiquinone] 1 alpha subcomplex subunit 8; Complex I-19kD; CI-19kD; Complex I-PGIV; CI-PGIV; NADH-ubiquinone oxidoreductase 19 kDa subunit





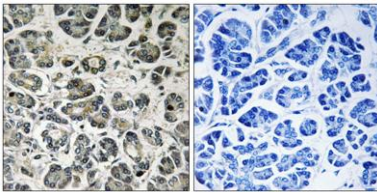
Background

The protein encoded by this gene belongs to the complex I 19 kDa subunit family. Mammalian complex I is composed of 45 different subunits. This protein has NADH dehydrogenase activity and oxidoreductase activity. It plays an important role in transferring electrons from NADH to the respiratory chain. The immediate electron acceptor for the enzyme is believed to be ubiquinone. Alternative splicing of this gene results in multiple transcript variants encoding different isoforms. [provided by RefSeq, Dec 2015],



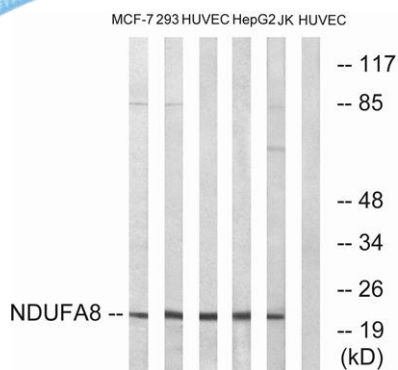
Western Blot analysis of various cells using NDUFA8 Polyclonal Antibody diluted at 1:1000

Immunohistochemistry analysis of paraffin-embedded human pancreas tissue, using NDUFA8 Antibody. The picture on the right is blocked with the synthesized peptide.





ELK Biotechnology



Western blot analysis of lysates from HUVEC, MCF-7, Jurkat, HepG2, and 293 cells, using NDUFA8 Antibody. The lane on the right is blocked with the synthesized peptide.



+86-27-59760950

ELKbio@ELKbiotech.com

www.elkbiotech.com

23-2, No.388 Gaoxin 2nd Road, Wuhan East Lake Hi-tech Development Zone, Hubei, P.R.C.