



NDUFA4L2 rabbit pAb

Cat No.:ES2907

For research use only

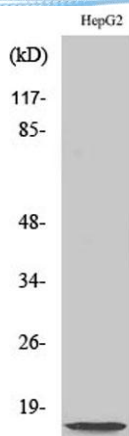
Overview

Product Name	NDUFA4L2 rabbit pAb
Host species	Rabbit
Applications	WB;ELISA
Species Cross-Reactivity	Human;Mouse
Recommended dilutions	Western Blot: 1/500 - 1/2000. ELISA: 1/20000. Not yet tested in other applications.
Immunogen	The antiserum was produced against synthesized peptide derived from human NDUFA4L2. AA range:38-87
Specificity	NDUFA4L2 Polyclonal Antibody detects endogenous levels of NDUFA4L2 protein.
Formulation	Liquid in PBS containing 50% glycerol, 0.5% BSA and 0.02% sodium azide.
Storage	Store at -20°C. Avoid repeated freeze-thaw cycles.
Protein Name	NADH dehydrogenase [ubiquinone] 1 alpha subcomplex subunit 4-like 2
Gene Name	NDUFA4L2
Cellular localization	mitochondrial respiratory chain complex IV,integral component of membrane,
Purification	The antibody was affinity-purified from rabbit antiserum by affinity-chromatography using epitope-specific immunogen.
Clonality	Polyclonal
Concentration	1 mg/ml
Observed band	15kD
Human Gene ID	56901
Human Swiss-Prot Number	Q9NRX3
Alternative Names	NDUFA4L2; NADH dehydrogenase [ubiquinone] 1 alpha subcomplex subunit 4-like 2; NADH-ubiquinone oxidoreductase MLRQ subunit homolog; NUOMS
Background	similarity:Belongs to the complex I NDUFA4 subunit family.,

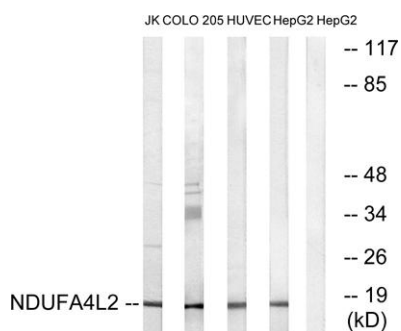




ELK Biotechnology



Western Blot analysis of various cells using NDUFA4L2 Polyclonal Antibody diluted at 1:2000



Western blot analysis of lysates from HepG2, HUVEC, COLO, and Jurkat cells, using NDUFA4L2 Antibody. The lane on the right is blocked with the synthesized peptide.



+86-27-59760950

ELKbio@ELKbiotech.com

www.elkbiotech.com

23-2, No.388 Gaoxin 2nd Road, Wuhan East Lake Hi-tech Development Zone, Hubei, P.R.C