



Na⁺ CP type IX α rabbit pAb

Cat No.:ES2890

For research use only

Overview

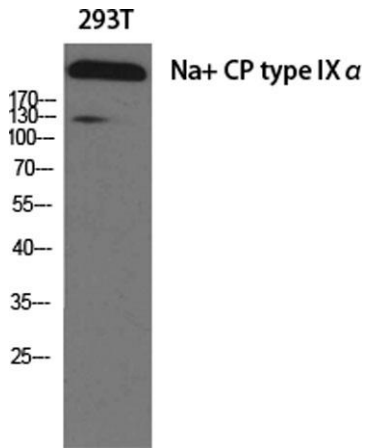
Product Name	Na ⁺ CP type IX α rabbit pAb
Host species	Rabbit
Applications	WB;IHC;IF;ELISA
Species Cross-Reactivity	Human;Mouse;Rat
Recommended dilutions	Western Blot: 1/500 - 1/2000. Immunohistochemistry: 1/100 - 1/300. ELISA: 1/40000. Not yet tested in other applications.
Immunogen	The antiserum was produced against synthesized peptide derived from human SCN9A. AA range:651-700
Specificity	Na ⁺ CP type IX α Polyclonal Antibody detects endogenous levels of Na ⁺ CP type IX α protein.
Formulation	Liquid in PBS containing 50% glycerol, 0.5% BSA and 0.02% sodium azide.
Storage	Store at -20°C. Avoid repeated freeze-thaw cycles.
Protein Name	Sodium channel protein type 9 subunit alpha
Gene Name	SCN9A
Cellular localization	Cell membrane ; Multi-pass membrane protein . Cell projection, neuron projection . In neurite terminals. .
Purification	The antibody was affinity-purified from rabbit antiserum by affinity-chromatography using epitope-specific immunogen.
Clonality	Polyclonal
Concentration	1 mg/ml
Observed band	220kD
Human Gene ID	6335
Human Swiss-Prot Number	Q15858
Alternative Names	SCN9A; NENA; Sodium channel protein type 9 subunit alpha; Neuroendocrine sodium channel; hNE-Na; Peripheral sodium channel 1; PN1; Sodium channel protein type IX subunit alpha; Voltage-gated sodium channel subunit alpha Nav1.7





Background

This gene encodes a voltage-gated sodium channel which plays a significant role in nociception signaling. Mutations in this gene have been associated with primary erythralgia, channelopathy-associated insensitivity to pain, and paroxysmal extreme pain disorder. [provided by RefSeq, Aug 2009],



Western Blot analysis of various cells using Na⁺ CP type IX α Polyclonal Antibody diluted at 1:1000

Immunohistochemistry analysis of paraffin-embedded human lung carcinoma tissue, using SCN9A Antibody. The picture on the right is blocked with the synthesized peptide.

