



Na⁺ CP type II β rabbit pAb

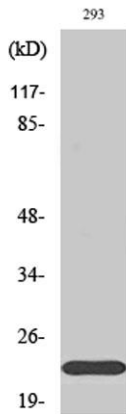
Cat No.:ES2889

For research use only

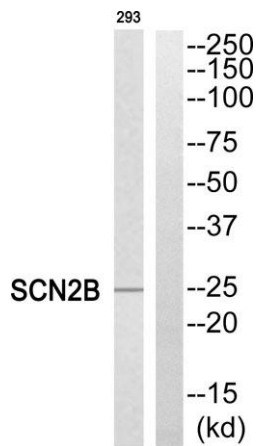
Overview

Product Name	Na ⁺ CP type II β rabbit pAb
Host species	Rabbit
Applications	WB;ELISA;IHC
Species Cross-Reactivity	Human;Mouse;Rat
Recommended dilutions	WB 1:500-2000;IHC-p 1:50-300; ELISA 2000-20000
Immunogen	The antiserum was produced against synthesized peptide derived from human SCN2B. AA range:71-120
Specificity	Na ⁺ CP type II β Polyclonal Antibody detects endogenous levels of Na ⁺ CP type II β protein.
Formulation	Liquid in PBS containing 50% glycerol, 0.5% BSA and 0.02% sodium azide.
Storage	Store at -20°C. Avoid repeated freeze-thaw cycles.
Protein Name	Sodium channel subunit beta-2
Gene Name	SCN2B
Cellular localization	Membrane; Single-pass type I membrane protein.
Purification	The antibody was affinity-purified from rabbit antiserum by affinity-chromatography using epitope-specific immunogen.
Clonality	Polyclonal
Concentration	1 mg/ml
Observed band	24kD
Human Gene ID	6327
Human Swiss-Prot Number	O60939
Alternative Names	SCN2B; Sodium channel subunit beta-2
Background	The protein encoded by this gene is the beta 2 subunit of the type II voltage-gated sodium channel. The encoded protein is involved in cell-cell adhesion and cell migration. Defects in this gene can be a cause of Brugada Syndrome, atrial fibrillation, or sudden infant death syndrome. [provided by RefSeq, Jul 2015],

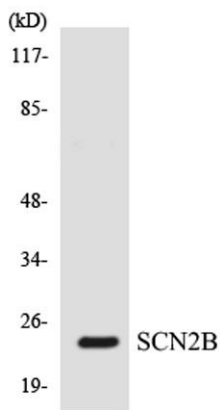




Western Blot analysis of various cells using Na⁺ CP type II β Polyclonal Antibody



Western blot analysis of SCN2B Antibody. The lane on the right is blocked with the SCN2B peptide.

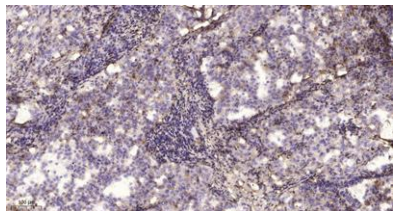


Western blot analysis of the lysates from HepG2 cells using SCN2B antibody.





ELK Biotechnology



Immunohistochemical analysis of paraffin-embedded human lung cancer. 1, Antibody was diluted at 1:200(4° overnight). 2, Tris-EDTA,pH9.0 was used for antigen retrieval. 3,Secondary antibody was diluted at 1:200(room temperature, 45min).



+86-27-59760950

ELKbio@ELKbiotech.com

www.elkbiotech.com

23-2, No.388 Gaoxin 2nd Road,Wuhan East Lake Hi-tech Development Zone, Hubei , P.R.C