



MYL3 rabbit pAb

Cat No.:ES2876

For research use only

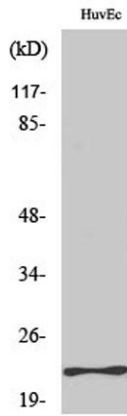
Overview

Product Name	MYL3 rabbit pAb
Host species	Rabbit
Applications	WB;ELISA;IHC
Species Cross-Reactivity	Human;Rat;Mouse;
Recommended dilutions	WB 1:500-2000;IHC-p 1:50-300; ELISA 2000-20000
Immunogen	The antiserum was produced against synthesized peptide derived from human MYL3. AA range:71-120
Specificity	MYL3 Polyclonal Antibody detects endogenous levels of MYL3 protein.
Formulation	Liquid in PBS containing 50% glycerol, 0.5% BSA and 0.02% sodium azide.
Storage	Store at -20°C. Avoid repeated freeze-thaw cycles.
Protein Name	Myosin light chain 3
Gene Name	MYL3
Cellular localization	cytosol,muscle myosin complex,myosin complex,sarcomere,A band,I band,
Purification	The antibody was affinity-purified from rabbit antiserum by affinity-chromatography using epitope-specific immunogen.
Clonality	Polyclonal
Concentration	1 mg/ml
Observed band	22kD
Human Gene ID	4634
Human Swiss-Prot Number	P08590
Alternative Names	MYL3; Myosin light chain 3; Cardiac myosin light chain 1; CMLC1; Myosin light chain 1; slow-twitch muscle B/ventricular isoform; MLC1SB; Ventricular/slow twitch myosin alkali light chain
Background	MYL3 encodes myosin light chain 3, an alkali light chain also referred to in the literature as both the ventricular isoform and the slow skeletal muscle isoform. Mutations in MYL3 have been identified as

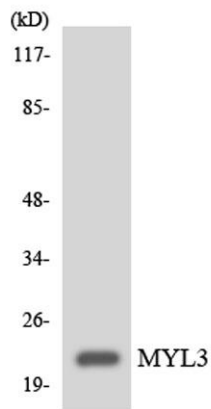




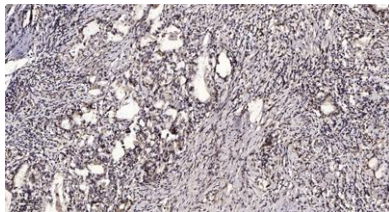
a cause of mid-left ventricular chamber type hypertrophic cardiomyopathy. [provided by RefSeq, Jul 2008],



Western Blot analysis of various cells using MYL3 Polyclonal Antibody



Western blot analysis of the lysates from HeLa cells using MYL3 antibody.



Immunohistochemical analysis of paraffin-embedded human Gastric adenocarcinoma. 1, Antibody was diluted at 1:200(4° overnight). 2, Tris-EDTA,pH9.0 was used for antigen retrieval. 3,Secondary antibody was diluted at 1:200(room temperature, 45min).

