

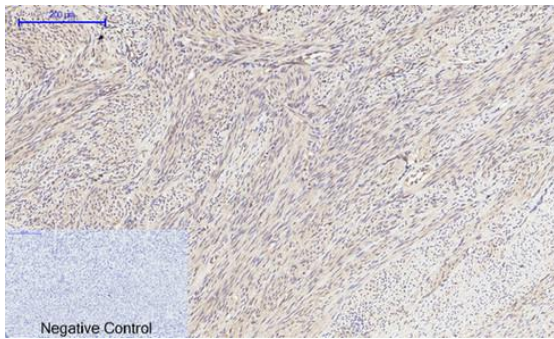


ELK Biotechnology

mTOR Rabbit pAb
Catalog Number: ES2866
For research use only.

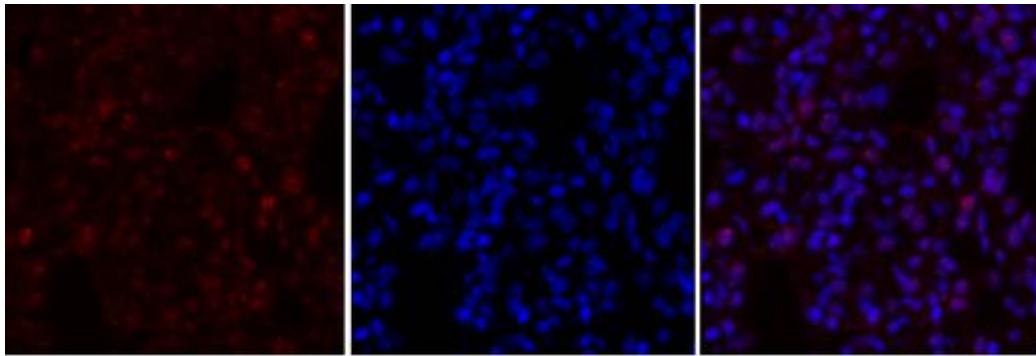
Overview

Product Name	mTOR polyclonal antibody
Host species	Rabbit
Applications	WB,IHC-p,IF,ELISA
Species Cross-Reactivity	Human,Mouse,Rat
Recommended dilutions	Western Blot:1/500-1/2000 Immunohistochemistry:1/100-1/300 Immunofluorescence:1/200-1/1000 ELISA:1/40000
Immunogen	Synthesized peptide derived from human mTOR around the non-phosphorylation site of S2448.
Specificity	mTOR Polyclonal Antibody detects endogenous levels of mTOR protein.
Formulation	Liquid in PBS containing 50% glycerol, 0.5% BSA and 0.02% sodium azide.
Storage	Shipped at 4°C. Upon delivery aliquot and store at -20°C or -80°C. Avoid repeated freeze / thaw cycles.
Protein Name	mTOR
Gene Name	MTOR
Purification	The antibody was affinity-purified from rabbit antiserum by affinity-chromatography using epitope-specific immunogen.
Clonality	Polyclonal
Concentration	1 mg/ml
Observed band	289kDa
Human Gene ID	2475
Human Swiss-Prot Number	P42345
Alternative Names	MTOR; FRAP; FRAP1; FRAP2; RAFT1; RAPT1; Serine/threonine-protein kinase mTOR; FK506-binding protein 12-rapamycin complex-associated protein 1; FKBP12-rapamycin complex-associated protein; Mammalian target of rapamycin; mTOR; Mechanistic tar



Immunohistochemical analysis of paraffin-

embedded Human-uterus tissue. 1, mTOR Polyclonal Antibody was diluted at 1:200 (4° C, overnight). 2, Sodium citrate pH 6.0 was used for antibody retrieval (>98° C, 20min). 3, Secondary antibody was diluted at 1:200 (room temperature, 30min). Negative control was used by secondary antibody only.



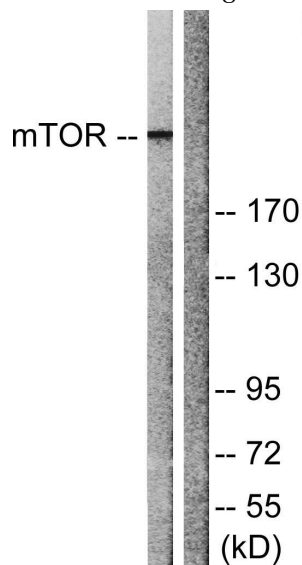
A

B

C

Immunofluor

escence analysis of rat-lung tissue. 1, mTOR Polyclonal Antibody (red) was diluted at 1:200 (4° C, overnight). 2, Cy3 labeled Secondary antibody was diluted at 1:300 (room temperature, 50min). 3, Picture B: DAPI (blue) 10min. Picture A: Target. Picture B: DAPI. Picture C: merge of A+B



Western blot analysis of lysates from NIH/3T3 cells, treated with Insulin 0.01U/ml 15', using mTOR Antibody. The lane on the right is blocked with the synthesized peptide.