



# MMP-16 rabbit pAb

Cat No.:ES2864

For research use only

## Overview

<b>Product Name</b>	MMP-16 rabbit pAb
<b>Host species</b>	Rabbit
<b>Applications</b>	WB;IHC;IF;ELISA
<b>Species Cross-Reactivity</b>	Human;Mouse;Rat
<b>Recommended dilutions</b>	Western Blot: 1/500 - 1/2000. Immunohistochemistry: 1/100 - 1/300. ELISA: 1/10000. Not yet tested in other applications.
<b>Immunogen</b>	The antiserum was produced against synthesized peptide derived from human MMP-16. AA range:551-600
<b>Specificity</b>	MMP-16 Polyclonal Antibody detects endogenous levels of MMP-16 protein.
<b>Formulation</b>	Liquid in PBS containing 50% glycerol, 0.5% BSA and 0.02% sodium azide.
<b>Storage</b>	Store at -20°C. Avoid repeated freeze-thaw cycles.
<b>Protein Name</b>	Matrix metalloproteinase-16
<b>Gene Name</b>	MMP16
<b>Cellular localization</b>	[Isoform Long]: Cell membrane ; Single-pass type I membrane protein ; Extracellular side . Localized at the cell surface of melanoma cells.; [Isoform Short]: Secreted, extracellular space, extracellular matrix. Cell surface. Localized at the cell surface
<b>Purification</b>	The antibody was affinity-purified from rabbit antiserum by affinity-chromatography using epitope-specific immunogen.
<b>Clonality</b>	Polyclonal
<b>Concentration</b>	1 mg/ml
<b>Observed band</b>	70kD
<b>Human Gene ID</b>	4325
<b>Human Swiss-Prot Number</b>	P51512
<b>Alternative Names</b>	MMP16; MMPX2; Matrix metalloproteinase-16; MMP-16; MMP-X2; Membrane-type matrix metalloproteinase 3; MT-MMP 3; MTMMP3;

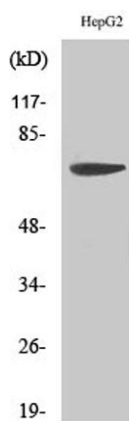




## Background

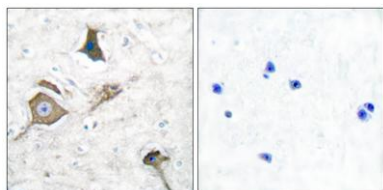
Membrane-type-3 matrix metalloproteinase;  
MT3-MMP; MT3MMP

Proteins of the matrix metalloproteinase (MMP) family are involved in the breakdown of extracellular matrix in normal physiological processes, such as embryonic development, reproduction, and tissue remodeling, as well as in disease processes, such as arthritis and metastasis. Most MMP's are secreted as inactive proproteins which are activated when cleaved by extracellular proteinases. The encoded protein activates MMP2 by cleavage. This gene was once referred to as MT-MMP2, but was renamed as MT-MMP3 or MMP16. [provided by RefSeq, Oct 2010],



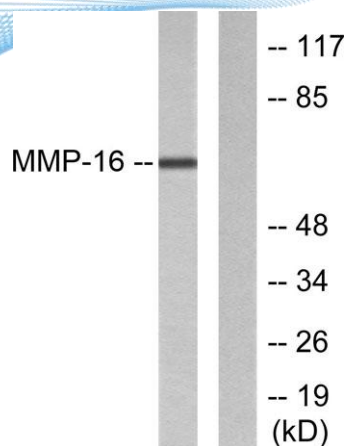
Western Blot analysis of various cells using MMP-16  
Polyclonal Antibody diluted at 1:500

Immunohistochemistry analysis of paraffin-embedded human brain tissue, using MMP-16 Antibody. The picture on the right is blocked with the synthesized peptide.





**ELK Biotechnology**



Western blot analysis of lysates from HepG2 cells, using MMP-16 Antibody. The lane on the right is blocked with the synthesized peptide.



+86-27-59760950

[ELKbio@ELKbiotech.com](mailto:ELKbio@ELKbiotech.com)

[www.elkbiotech.com](http://www.elkbiotech.com)

23-2, No.388 Gaoxin 2nd Road, Wuhan East Lake Hi-tech Development Zone, Hubei, P.R.C