



MTHFR rabbit pAb

Cat No.:ES2863

For research use only

Overview

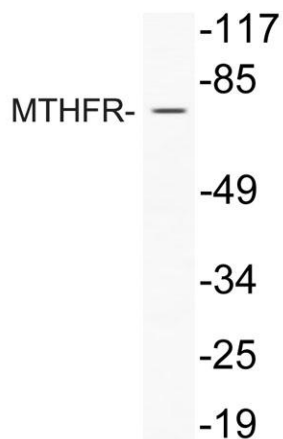
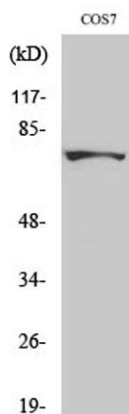
Product Name	MTHFR rabbit pAb
Host species	Rabbit
Applications	WB;ELISA;IHC
Species Cross-Reactivity	Human;Mouse;Monkey
Recommended dilutions	WB 1:500-2000;IHC-p 1:50-300; ELISA 2000-20000
Immunogen	The antiserum was produced against synthesized peptide derived from human MTHFR. AA range:314-363
Specificity	MTHFR Polyclonal Antibody detects endogenous levels of MTHFR protein.
Formulation	Liquid in PBS containing 50% glycerol, 0.5% BSA and 0.02% sodium azide.
Storage	Store at -20°C. Avoid repeated freeze-thaw cycles.
Protein Name	Methylenetetrahydrofolate reductase
Gene Name	MTHFR
Cellular localization	cytosol,synapse,
Purification	The antibody was affinity-purified from rabbit antiserum by affinity-chromatography using epitope-specific immunogen.
Clonality	Polyclonal
Concentration	1 mg/ml
Observed band	75kD
Human Gene ID	4524
Human Swiss-Prot Number	P42898
Alternative Names	MTHFR; Methylenetetrahydrofolate reductase
Background	The protein encoded by this gene catalyzes the conversion of 5,10-methylenetetrahydrofolate to 5-methyltetrahydrofolate, a co-substrate for homocysteine remethylation to methionine. Genetic variation in this gene influences susceptibility to occlusive vascular disease, neural tube defects, colon cancer and acute leukemia, and mutations in this gene are associated with





methylenetetrahydrofolate reductase deficiency.[provided by RefSeq, Oct 2009],

Western Blot analysis of various cells using MTHFR Polyclonal Antibody



Western blot analysis of lysate from COLO205 cells treated with Forskolin, using MTHFR antibody.

Immunohistochemical analysis of paraffin-embedded human oophoroma. 1, Antibody was diluted at 1:200(4° overnight). 2, Tris-EDTA,pH9.0 was used for antigen retrieval. 3,Secondary antibody was diluted at 1:200(room temperature, 45min).

