



# Sin3B rabbit pAb

Cat No.:ES2858

For research use only

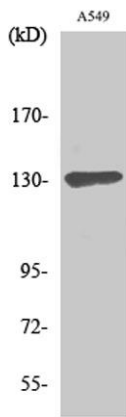
## Overview

|                                 |   |
|---------------------------------|---|
| <b>Product Name</b>             | Sin3B rabbit pAb  |
| <b>Host species</b>             | Rabbit  |
| <b>Applications</b>             | WB;ELISA;IHC  |
| <b>Species Cross-Reactivity</b> | Human;Rat;Mouse;  |
| <b>Recommended dilutions</b>    | WB 1:500-2000;IHC-p 1:50-300; ELISA 2000-20000  |
| <b>Immunogen</b>                | The antiserum was produced against synthesized peptide derived from human SIN3B. AA range:221-270   |
| <b>Specificity</b>              | Sin3B Polyclonal Antibody detects endogenous levels of Sin3B protein.   |
| <b>Formulation</b>              | Liquid in PBS containing 50% glycerol, 0.5% BSA and 0.02% sodium azide.   |
| <b>Storage</b>                  | Store at -20°C. Avoid repeated freeze-thaw cycles.  |
| <b>Protein Name</b>             | Paired amphipathic helix protein Sin3b  |
| <b>Gene Name</b>                | SIN3B   |
| <b>Cellular localization</b>    | Nucleus .   |
| <b>Purification</b>             | The antibody was affinity-purified from rabbit antiserum by affinity-chromatography using epitope-specific immunogen.   |
| <b>Clonality</b>                | Polyclonal  |
| <b>Concentration</b>            | 1 mg/ml   |
| <b>Observed band</b>            | 130kD   |
| <b>Human Gene ID</b>            | 23309   |
| <b>Human Swiss-Prot Number</b>  | O75182  |
| <b>Alternative Names</b>        | SIN3B; KIAA0700; Paired amphipathic helix protein Sin3b; Histone deacetylase complex subunit Sin3b; Transcriptional corepressor Sin3b   |
| <b>Background</b>               | function:Acts as a transcriptional repressor. Interacts with MXI1 to repress MYC responsive genes and antagonize MYC oncogenic activities. Interacts with MAD-MAX heterodimers by binding to MAD. The heterodimer then represses transcription by tethering SIN3B to DNA. Also forms a complex with |



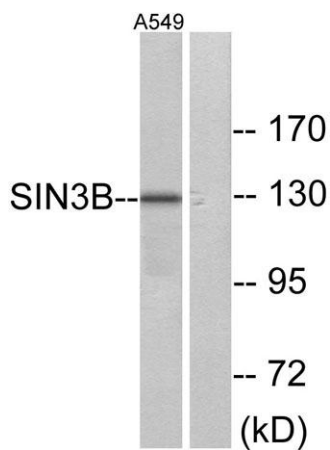
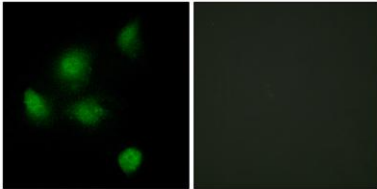


FOXK1 which represses transcription.,similarity:Contains 3 PAH (paired amphipathic helix) repeats.,subunit:Interacts with FOXK1/MNF, MXI, MAD, NCOR1 and SAP30. Interaction with SDS3 enhances the interaction with HDAC1 to form a complex. Interacts with MAD3, MAD4, MAEL, REST and SETDB1 (By similarity). Interacts with HCFC1.,



Western Blot analysis of various cells using Sin3B Polyclonal Antibody

Immunofluorescence analysis of HeLa cells, using SIN3B Antibody. The picture on the right is blocked with the synthesized peptide.

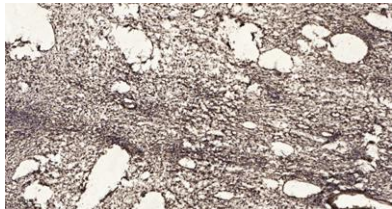


Western blot analysis of lysates from A549 cells, using SIN3B Antibody. The lane on the right is blocked with the synthesized peptide.





**ELK Biotechnology**



Immunohistochemical analysis of paraffin-embedded human oophoroma. 1, Antibody was diluted at 1:200(4° overnight). 2, Tris-EDTA,pH9.0 was used for antigen retrieval. 3,Secondary antibody was diluted at 1:200(room temperature, 45min).



+86-27-59760950

[ELKbio@ELKbiotech.com](mailto:ELKbio@ELKbiotech.com)

[www.elkbiotech.com](http://www.elkbiotech.com)

23-2, No.388 Gaoxin 2nd Road,Wuhan East Lake Hi-tech Development Zone, Hubei , P.R.C