



MRP-S12 rabbit pAb

Cat No.:ES2846

For research use only

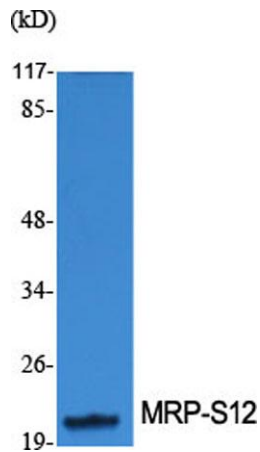
Overview

Product Name	MRP-S12 rabbit pAb
Host species	Rabbit
Applications	WB;IHC
Species Cross-Reactivity	Human;Mouse
Recommended dilutions	WB 1:500-2000;IHC-p 1:50-300
Immunogen	The antiserum was produced against synthesized peptide derived from human MRPS12. AA range:21-70
Specificity	MRP-S12 Polyclonal Antibody detects endogenous levels of MRP-S12 protein.
Formulation	Liquid in PBS containing 50% glycerol, 0.5% BSA and 0.02% sodium azide.
Storage	Store at -20°C. Avoid repeated freeze-thaw cycles.
Protein Name	28S ribosomal protein S12 mitochondrial
Gene Name	MRPS12
Cellular localization	Mitochondrion .
Purification	The antibody was affinity-purified from rabbit antiserum by affinity-chromatography using epitope-specific immunogen.
Clonality	Polyclonal
Concentration	1 mg/ml
Observed band	20kD
Human Gene ID	6183
Human Swiss-Prot Number	O15235
Alternative Names	MRPS12; RPMS12; RPSM12; 28S ribosomal protein S12; mitochondrial; MRP-S12; S12mt; MT-RPS12
Background	Mammalian mitochondrial ribosomal proteins are encoded by nuclear genes and help in protein synthesis within the mitochondrion. Mitochondrial ribosomes (mitoribosomes) consist of a small 28S subunit and a large 39S subunit. They have an estimated 75% protein to rRNA composition compared to prokaryotic ribosomes, where this ratio

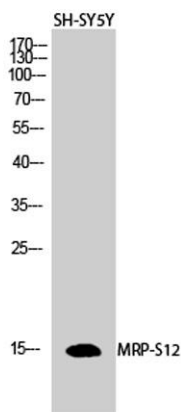




is reversed. Another difference between mammalian mitoribosomes and prokaryotic ribosomes is that the latter contain a 5S rRNA. Among different species, the proteins comprising the mitoribosome differ greatly in sequence, and sometimes in biochemical properties, which prevents easy recognition by sequence homology. This gene encodes a 28S subunit protein that belongs to the ribosomal protein S12P family. The encoded protein is a key component of the ribosomal small subunit and controls the decoding fidelity and susceptibility to aminoglycoside antibiotics. Th



Western Blot analysis of various cells using MRP-S12
Polyclonal Antibody diluted at 1:1000

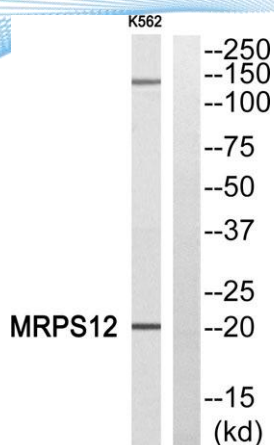


Western Blot analysis of SH-SY5Y cells using MRP-S12
Polyclonal Antibody diluted at 1:1000

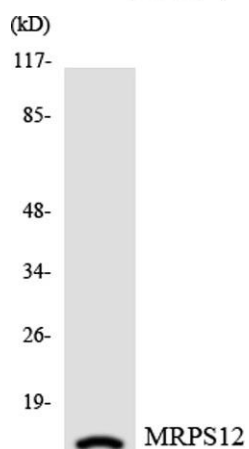




ELK Biotechnology



Western blot analysis of MRPS12 Antibody. The lane on the right is blocked with the MRPS12 peptide.



Western blot analysis of the lysates from HepG2 cells using MRPS12 antibody.



+86-27-59760950

ELKbio@ELKbiotech.com

www.elkbiotech.com

23-2, No.388 Gaoxin 2nd Road, Wuhan East Lake Hi-tech Development Zone, Hubei, P.R.C