



MRP-L18 rabbit pAb

Cat No.:ES2833

For research use only

Overview

Product Name	MRP-L18 rabbit pAb
Host species	Rabbit
Applications	WB;IHC;IF;ELISA
Species Cross-Reactivity	Human;Rat;Mouse;
Recommended dilutions	Western Blot: 1/500 - 1/2000. Immunohistochemistry: 1/100 - 1/300. ELISA: 1/20000. Not yet tested in other applications.
Immunogen	The antiserum was produced against synthesized peptide derived from human MRPL18. AA range:1-50
Specificity	MRP-L18 Polyclonal Antibody detects endogenous levels of MRP-L18 protein.
Formulation	Liquid in PBS containing 50% glycerol, 0.5% BSA and 0.02% sodium azide.
Storage	Store at -20°C. Avoid repeated freeze-thaw cycles.
Protein Name	39S ribosomal protein L18 mitochondrial
Gene Name	MRPL18
Cellular localization	Mitochondrion .
Purification	The antibody was affinity-purified from rabbit antiserum by affinity-chromatography using epitope-specific immunogen.
Clonality	Polyclonal
Concentration	1 mg/ml
Observed band	21kD
Human Gene ID	29074
Human Swiss-Prot Number	Q9H0U6
Alternative Names	MRPL18; HSPC071; 39S ribosomal protein L18; mitochondrial; L18mt; MRP-L18
Background	This nuclear gene encodes a protein component of the larger 39S subunit of mitochondrial ribosome. This protein may also aid in the import of nuclear-encoded 5S rRNA into mitochondria. Alternative splicing results in multiple transcript



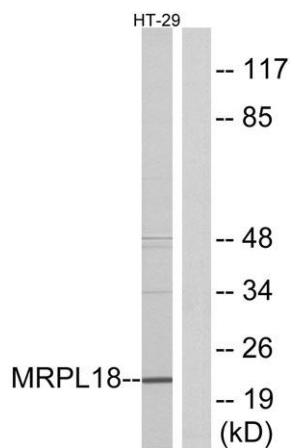


variants, most of which are not predicted to encode a protein. A pseudogene of this gene is found on chromosome 16. [provided by RefSeq, Jan 2016],

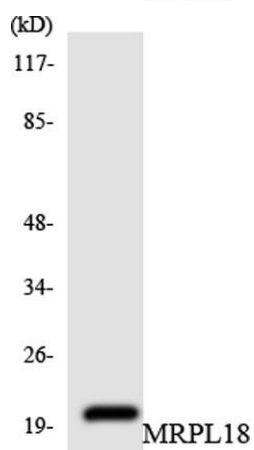
Western Blot analysis of various cells using MRP-L18 Polyclonal Antibody diluted at 1:1000



Western blot analysis of lysates from HT-29 cells, using MRPL18 Antibody. The lane on the right is blocked with the synthesized peptide.

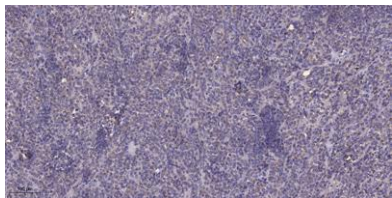


Western blot analysis of the lysates from HUVEC cells using MRPL18 antibody.





ELK Biotechnology



Immunohistochemical analysis of paraffin-embedded human Colon cancer. 1, Antibody was diluted at 1:200(4° overnight). 2, Tris-EDTA,pH9.0 was used for antigen retrieval. 3,Secondary antibody was diluted at 1:200(room temperature, 45min).



+86-27-59760950

ELKbio@ELKbiotech.com

www.elkbiotech.com

23-2, No.388 Gaoxin 2nd Road,Wuhan East Lake Hi-tech Development Zone, Hubei , P.R.C