



# MRP7 rabbit pAb

Cat No.:ES2825

For research use only

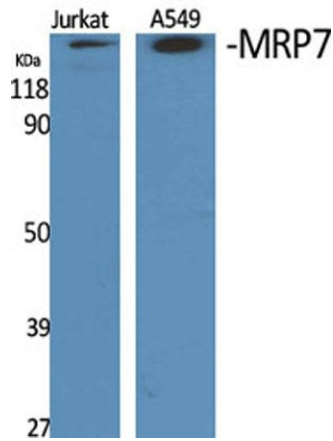
## Overview

<b>Product Name</b>	MRP7 rabbit pAb
<b>Host species</b>	Rabbit
<b>Applications</b>	WB;IHC
<b>Species Cross-Reactivity</b>	Human;Monkey
<b>Recommended dilutions</b>	WB 1:500-2000;IHC-p 1:50-300
<b>Immunogen</b>	The antiserum was produced against synthesized peptide derived from human MRP7. AA range:835-884
<b>Specificity</b>	MRP7 Polyclonal Antibody detects endogenous levels of MRP7 protein.
<b>Formulation</b>	Liquid in PBS containing 50% glycerol, 0.5% BSA and 0.02% sodium azide.
<b>Storage</b>	Store at -20°C. Avoid repeated freeze-thaw cycles.
<b>Protein Name</b>	Multidrug resistance-associated protein 7
<b>Gene Name</b>	ABCC10
<b>Cellular localization</b>	Cell membrane ; Multi-pass membrane protein . Basolateral cell membrane ; Multi-pass membrane protein .
<b>Purification</b>	The antibody was affinity-purified from rabbit antiserum by affinity-chromatography using epitope-specific immunogen.
<b>Clonality</b>	Polyclonal
<b>Concentration</b>	1 mg/ml
<b>Observed band</b>	162kD
<b>Human Gene ID</b>	89845
<b>Human Swiss-Prot Number</b>	Q5T3U5
<b>Alternative Names</b>	ABCC10; MRP7; SIMRP7; Multidrug resistance-associated protein 7; ATP-binding cassette sub-family C member 10
<b>Background</b>	The protein encoded by this gene is a member of the superfamily of ATP-binding cassette (ABC) transporters. ABC proteins transport various molecules across extra- and intra-cellular

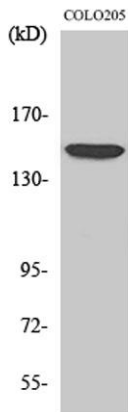




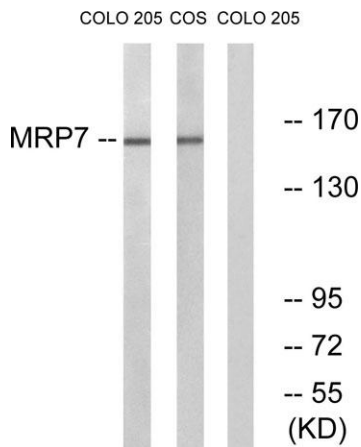
membranes. ABC genes are divided into seven distinct subfamilies (ABC1, MDR/TAP, MRP, ALD, OABP, GCN20, and White). This ABC full-transporter is a member of the MRP subfamily which is involved in multi-drug resistance. Multiple transcript variants encoding different isoforms have been found for this gene.[provided by RefSeq, Nov 2010],



Western Blot analysis of various cells using MRP7 Polyclonal Antibody diluted at 1:1000



Western Blot analysis of COS7 cells using MRP7 Polyclonal Antibody diluted at 1:1000

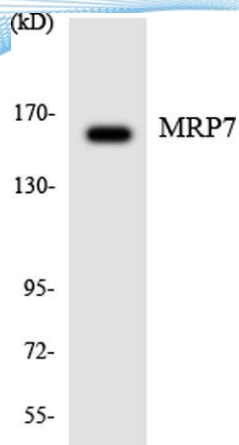


Western blot analysis of lysates from COLO and COS7 cells, using MRP7 Antibody. The lane on the right is blocked with the synthesized peptide.





**ELK Biotechnology**



Western blot analysis of the lysates from HepG2 cells using MRP7 antibody.



+86-27-59760950

[ELKbio@ELKbiotech.com](mailto:ELKbio@ELKbiotech.com)

[www.elkbiotech.com](http://www.elkbiotech.com)

23-2, No.388 Gaoxin 2nd Road,Wuhan East Lake Hi-tech Development Zone, Hubei , P.R.C