



MRGG rabbit pAb

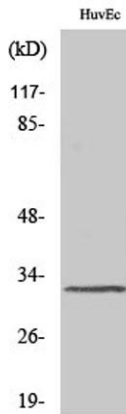
Cat No.:ES2822

For research use only

Overview

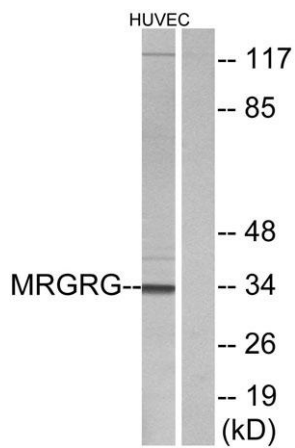
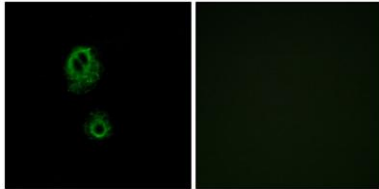
Product Name	MRGG rabbit pAb
Host species	Rabbit
Applications	WB;ELISA;IHC
Species Cross-Reactivity	Human;Rat;Mouse;
Recommended dilutions	WB 1:500-2000;IHC-p 1:50-300; ELISA 2000-20000
Immunogen	The antiserum was produced against synthesized peptide derived from human MRGRG. AA range:231-280
Specificity	MRGG Polyclonal Antibody detects endogenous levels of MRGG protein.
Formulation	Liquid in PBS containing 50% glycerol, 0.5% BSA and 0.02% sodium azide.
Storage	Store at -20°C. Avoid repeated freeze-thaw cycles.
Protein Name	Mas-related G-protein coupled receptor member G
Gene Name	MRGPRG
Cellular localization	Cell membrane; Multi-pass membrane protein.
Purification	The antibody was affinity-purified from rabbit antiserum by affinity-chromatography using epitope-specific immunogen.
Clonality	Polyclonal
Concentration	1 mg/ml
Observed band	34kD
Human Gene ID	386746
Human Swiss-Prot Number	Q86SM5
Alternative Names	MRGPRG; GPR169; MRGG; Mas-related G-protein coupled receptor member G; G-protein coupled receptor 169
Background	function:Orphan receptor. May regulate nociceptor function and/or development, including the sensation or modulation of pain.,similarity:Belongs to the G-protein coupled receptor 1 family. Mas subfamily.,





Western Blot analysis of various cells using MRGG Polyclonal Antibody

Immunofluorescence analysis of A549 cells, using MRGRG Antibody. The picture on the right is blocked with the synthesized peptide.

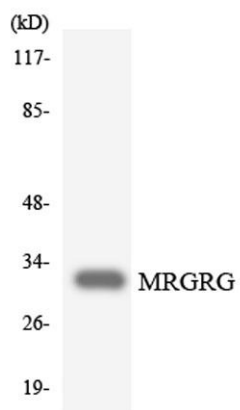


Western blot analysis of lysates from HUVEC cells, using MRGRG Antibody. The lane on the right is blocked with the synthesized peptide.





ELK Biotechnology



Western blot analysis of the lysates from HepG2 cells using MRGRG antibody.



+86-27-59760950

ELKbio@ELKbiotech.com

www.elkbiotech.com

23-2, No.388 Gaoxin 2nd Road, Wuhan East Lake Hi-tech Development Zone, Hubei, P.R.C