



MRGE rabbit pAb

Cat No.:ES2820

For research use only

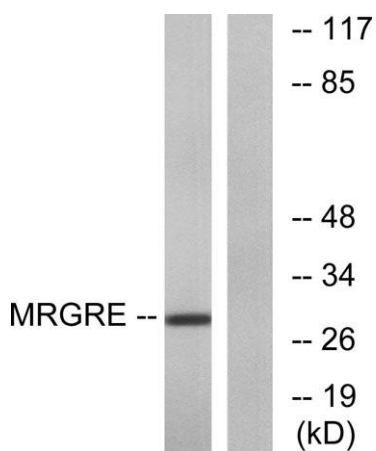
Overview

Product Name	MRGE rabbit pAb
Host species	Rabbit
Applications	WB;ELISA;IHC
Species Cross-Reactivity	Human;Mouse;Rat
Recommended dilutions	WB 1:500-2000;IHC-p 1:50-300; ELISA 2000-20000
Immunogen	The antiserum was produced against synthesized peptide derived from human MRGRE. AA range:171-220
Specificity	MRGE Polyclonal Antibody detects endogenous levels of MRGE protein.
Formulation	Liquid in PBS containing 50% glycerol, 0.5% BSA and 0.02% sodium azide.
Storage	Store at -20°C. Avoid repeated freeze-thaw cycles.
Protein Name	Mas-related G-protein coupled receptor member E
Gene Name	MRGPRE
Cellular localization	Cell membrane; Multi-pass membrane protein.
Purification	The antibody was affinity-purified from rabbit antiserum by affinity-chromatography using epitope-specific immunogen.
Clonality	Polyclonal
Concentration	1 mg/ml
Observed band	30kD
Human Gene ID	116534
Human Swiss-Prot Number	Q86SM8
Alternative Names	MRGPRE; GPR167; MRGE; Mas-related G-protein coupled receptor member E; G-protein coupled receptor 167
Background	function:Orphan receptor. May regulate nociceptor function and/or development, including the sensation or modulation of pain.,similarity:Belongs to the G-protein coupled receptor 1 family. Mas subfamily.,

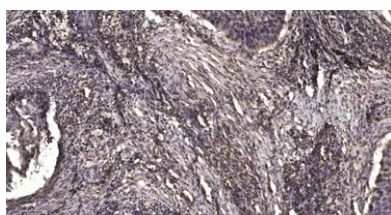




Western Blot analysis of various cells using MRGE Polyclonal Antibody



Western blot analysis of lysates from HeLa cells, using MRGRE Antibody. The lane on the right is blocked with the synthesized peptide.



Immunohistochemical analysis of paraffin-embedded human Squamous cell carcinoma of lung. 1, Antibody was diluted at 1:200(4° overnight). 2, Tris-EDTA,pH9.0 was used for antigen retrieval. 3,Secondary antibody was diluted at 1:200(room temperature, 45min).

