



# MRCK $\beta$ rabbit pAb

Cat No.:ES2818

For research use only

## Overview

<b>Product Name</b>	MRCK $\beta$ rabbit pAb
<b>Host species</b>	Rabbit
<b>Applications</b>	WB;IHC;IF;ELISA
<b>Species Cross-Reactivity</b>	Human;Mouse;Rat
<b>Recommended dilutions</b>	Western Blot: 1/500 - 1/2000. Immunohistochemistry: 1/100 - 1/300. ELISA: 1/40000. Not yet tested in other applications.
<b>Immunogen</b>	The antiserum was produced against synthesized peptide derived from human MRCKB. AA range:1641-1690
<b>Specificity</b>	MRCK $\beta$ Polyclonal Antibody detects endogenous levels of MRCK $\beta$ protein.
<b>Formulation</b>	Liquid in PBS containing 50% glycerol, 0.5% BSA and 0.02% sodium azide.
<b>Storage</b>	Store at -20°C. Avoid repeated freeze-thaw cycles.
<b>Protein Name</b>	Serine/threonine-protein kinase MRCK beta
<b>Gene Name</b>	CDC42BPB
<b>Cellular localization</b>	Cytoplasm . Cell membrane ; Peripheral membrane protein ; Cytoplasmic side . Cell junction . Cell projection, lamellipodium . Displays a dispersed punctate distribution and concentrates along the cell periphery, especially at the leading edge and cell-cel
<b>Purification</b>	The antibody was affinity-purified from rabbit antiserum by affinity-chromatography using epitope-specific immunogen.
<b>Clonality</b>	Polyclonal
<b>Concentration</b>	1 mg/ml
<b>Observed band</b>	194kD
<b>Human Gene ID</b>	9578
<b>Human Swiss-Prot Number</b>	Q9Y5S2
<b>Alternative Names</b>	CDC42BPB; KIAA1124; Serine/threonine-protein kinase MRCK beta; CDC42-binding protein kinase

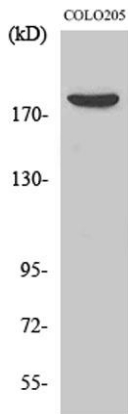




## Background

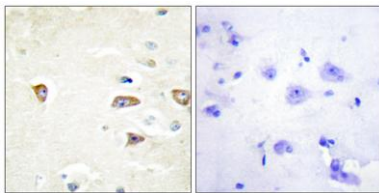
beta; CDC42BP-beta; DMPK-like beta; Myotonic dystrophy kinase-related CDC42-binding kinase beta; MRCK beta; Myotonic dystrophy protein kinase-like b

This gene encodes a member of the serine/threonine protein kinase family. The encoded protein contains a Cdc42/Rac-binding p21 binding domain resembling that of PAK kinase. The kinase domain of this protein is most closely related to that of myotonic dystrophy kinase-related ROK. Studies of the similar gene in rat suggested that this kinase may act as a downstream effector of Cdc42 in cytoskeletal reorganization. [provided by RefSeq, Jul 2008],



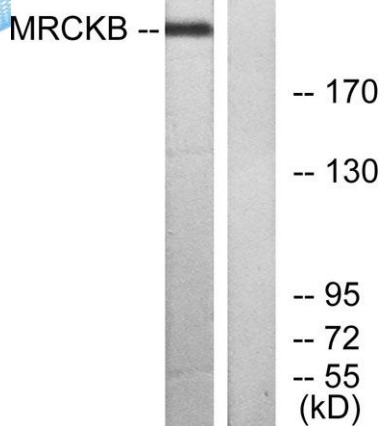
Western Blot analysis of various cells using MRCK $\beta$  Polyclonal Antibody

Immunohistochemistry analysis of paraffin-embedded human brain tissue, using MRCKB Antibody. The picture on the right is blocked with the synthesized peptide.





**ELK Biotechnology**



Western blot analysis of lysates from COLO cells, using MRCKB Antibody. The lane on the right is blocked with the synthesized peptide.



+86-27-59760950

[ELKbio@ELKbiotech.com](mailto:ELKbio@ELKbiotech.com)

[www.elkbiotech.com](http://www.elkbiotech.com)

23-2, No.388 Gaoxin 2nd Road,Wuhan East Lake Hi-tech Development Zone, Hubei , P.R.C