



# MOX-2 rabbit pAb

Cat No.:ES2815

For research use only

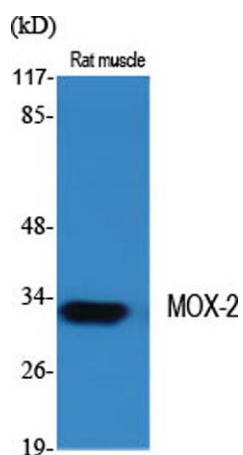
## Overview

<b>Product Name</b>	MOX-2 rabbit pAb
<b>Host species</b>	Rabbit
<b>Applications</b>	WB;IHC;IF;ELISA
<b>Species Cross-Reactivity</b>	Human;Mouse;Rat
<b>Recommended dilutions</b>	Western Blot: 1/500 - 1/2000. Immunohistochemistry: 1/100 - 1/300. ELISA: 1/10000. Not yet tested in other applications.
<b>Immunogen</b>	The antiserum was produced against synthesized peptide derived from human MEOX2. AA range:151-200
<b>Specificity</b>	MOX-2 Polyclonal Antibody detects endogenous levels of MOX-2 protein.
<b>Formulation</b>	Liquid in PBS containing 50% glycerol, 0.5% BSA and 0.02% sodium azide.
<b>Storage</b>	Store at -20°C. Avoid repeated freeze-thaw cycles.
<b>Protein Name</b>	Homeobox protein MOX-2
<b>Gene Name</b>	MEOX2
<b>Cellular localization</b>	Nucleus . Nucleus speckle .
<b>Purification</b>	The antibody was affinity-purified from rabbit antiserum by affinity-chromatography using epitope-specific immunogen.
<b>Clonality</b>	Polyclonal
<b>Concentration</b>	1 mg/ml
<b>Observed band</b>	33kD
<b>Human Gene ID</b>	4223
<b>Human Swiss-Prot Number</b>	P50222
<b>Alternative Names</b>	MEOX2; GAX; MOX2; Homeobox protein MOX-2; Growth arrest-specific homeobox; Mesenchyme homeobox 2
<b>Background</b>	This gene encodes a member of a subfamily of non-clustered, diverged, antennapedia-like homeobox-containing genes. The encoded protein may play a role in the regulation of vertebrate limb





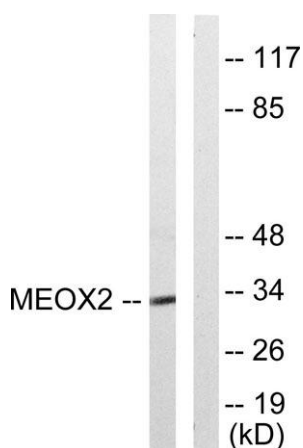
myogenesis. Mutations in the related mouse protein may be associated with craniofacial and/or skeletal abnormalities, in addition to neurovascular dysfunction observed in Alzheimer's disease. [provided by RefSeq, Jul 2008],



Western Blot analysis of various cells using MOX-2  
Polyclonal Antibody diluted at 1:2000



Western Blot analysis of COLO205 cells using MOX-2  
Polyclonal Antibody diluted at 1:2000



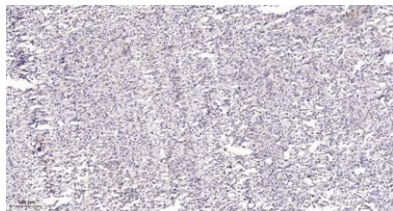
Western blot analysis of lysates from COLO205 cells, using MEOX2 Antibody. The lane on the right is blocked with the synthesized peptide.





**ELK Biotechnology**

Immunohistochemical analysis of paraffin-embedded human Small intestinal stromal tumor. 1, Tris-EDTA,pH9.0 was used for antigen retrieval. 2 Antibody was diluted at 1:200(4° overnight.3,Secondary antibody was diluted at 1:200(room temperature, 45min).



+86-27-59760950

[ELKbio@ELKbiotech.com](mailto:ELKbio@ELKbiotech.com)

[www.elkbiotech.com](http://www.elkbiotech.com)

23-2, No.388 Gaoxin 2nd Road,Wuhan East Lake Hi-tech Development Zone, Hubei , P.R.C