



MOV10L1 rabbit pAb

Cat No.:ES2814

For research use only

Overview

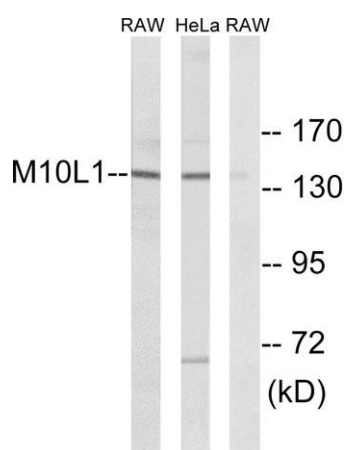
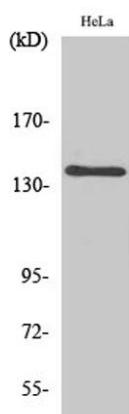
Product Name	MOV10L1 rabbit pAb
Host species	Rabbit
Applications	WB;IHC;IF;ELISA
Species Cross-Reactivity	Human;Rat;Mouse;
Recommended dilutions	Western Blot: 1/500 - 1/2000. Immunohistochemistry: 1/100 - 1/300. ELISA: 1/5000. Not yet tested in other applications.
Immunogen	The antiserum was produced against synthesized peptide derived from human MOV10L1. AA range:318-367
Specificity	MOV10L1 Polyclonal Antibody detects endogenous levels of MOV10L1 protein.
Formulation	Liquid in PBS containing 50% glycerol, 0.5% BSA and 0.02% sodium azide.
Storage	Store at -20°C. Avoid repeated freeze-thaw cycles.
Protein Name	Putative helicase Mov10l1
Gene Name	MOV10L1
Cellular localization	Cytoplasm . Component of the meiotic nuage, also named P granule, a germ-cell-specific organelle required to repress transposon activity during meiosis. .
Purification	The antibody was affinity-purified from rabbit antiserum by affinity-chromatography using epitope-specific immunogen.
Clonality	Polyclonal
Concentration	1 mg/ml
Observed band	140kD
Human Gene ID	54456
Human Swiss-Prot Number	Q9BXT6
Alternative Names	MOV10L1; Putative helicase Mov10l1; Moloney leukemia virus 10-like protein 1; MOV10-like protein 1
Background	Mov10 RISC complex RNA helicase like 1(MOV10L1)



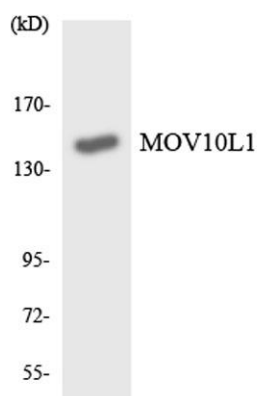


Homo sapiens This gene is similar to a mouse gene that encodes a putative RNA helicase and shows testis-specific expression. Multiple transcript variants encoding different isoforms have been found for this gene. [provided by RefSeq, Aug 2009],

Western Blot analysis of various cells using MOV10L1 Polyclonal Antibody diluted at 1:500



Western blot analysis of lysates from HeLa and RAW264.7 cells, using MOV10L1 Antibody. The lane on the right is blocked with the synthesized peptide.

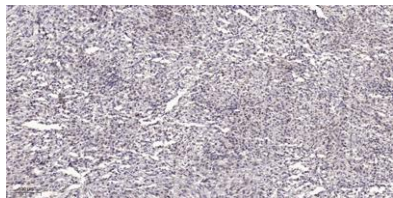


Western blot analysis of the lysates from HT-29 cells using MOV10L1 antibody.





ELK Biotechnology



Immunohistochemical analysis of paraffin-embedded human small intestinal carcinoma tissue. 1,primary Antibody was diluted at 1:200(4° overnight). 2, Sodium citrate pH 6.0 was used for antigen retrieval(>98°C,20min). 3,Secondary antibody was diluted at 1:200



+86-27-59760950

ELKbio@ELKbiotech.com

www.elkbiotech.com

23-2, No.388 Gaoxin 2nd Road,Wuhan East Lake Hi-tech Development Zone, Hubei , P.R.C