



mGluR5 rabbit pAb

Cat No.:ES2786

For research use only

Overview

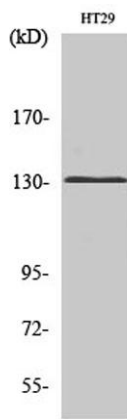
Product Name	mGluR5 rabbit pAb
Host species	Rabbit
Applications	WB;IHC;IF;ELISA
Species Cross-Reactivity	Human;Mouse;Rat
Recommended dilutions	Western Blot: 1/500 - 1/2000. Immunohistochemistry: 1/100 - 1/300. Immunofluorescence: 1/200 - 1/1000. ELISA: 1/10000. Not yet tested in other applications.
Immunogen	The antiserum was produced against synthesized peptide derived from human GRM5. AA range:21-70
Specificity	mGluR5 Polyclonal Antibody detects endogenous levels of mGluR5 protein.
Formulation	Liquid in PBS containing 50% glycerol, 0.5% BSA and 0.02% sodium azide.
Storage	Store at -20°C. Avoid repeated freeze-thaw cycles.
Protein Name	Metabotropic glutamate receptor 5
Gene Name	GRM5
Cellular localization	Cell membrane ; Multi-pass membrane protein .
Purification	The antibody was affinity-purified from rabbit antiserum by affinity-chromatography using epitope-specific immunogen.
Clonality	Polyclonal
Concentration	1 mg/ml
Observed band	130kD
Human Gene ID	2915
Human Swiss-Prot Number	P41594
Alternative Names	GRM5; GPRC1E; MGLUR5; Metabotropic glutamate receptor 5; mGluR5
Background	glutamate metabotropic receptor 5(GRM5) Homo sapiens This gene encodes a member of the G-protein coupled receptor 3 protein family. The encoded protein is a metabotropic glutamate receptor, whose signaling activates a



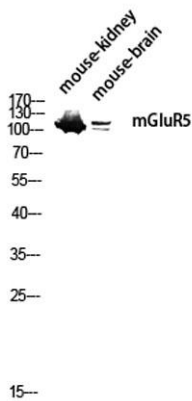


ELK Biotechnology

phosphatidylinositol-calcium second messenger system. This protein may be involved in the regulation of neural network activity and synaptic plasticity. Glutamatergic neurotransmission is involved in most aspects of normal brain function and can be perturbed in many neuropathologic conditions. A pseudogene of this gene has been defined on chromosome 11. Alternative splicing results in multiple transcript variants. [provided by RefSeq, May 2014],



Western Blot analysis of various cells using mGluR5 Polyclonal Antibody diluted at 1:1000



Western blot analysis of mouse-kidney mouse-brain lysis using mGluR5 antibody. Antibody was diluted at 1:1000



+86-27-59760950

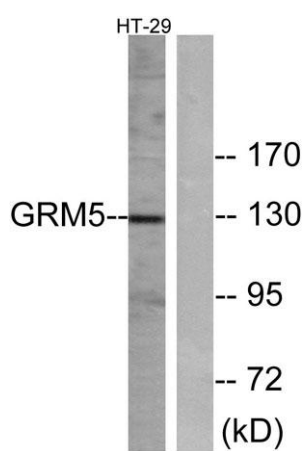
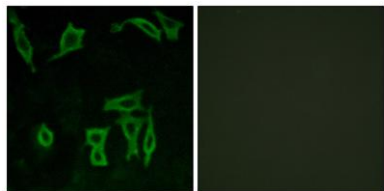
ELKbio@ELKbiotech.com

www.elkbiotech.com

23-2, No.388 Gaoxin 2nd Road, Wuhan East Lake Hi-tech Development Zone, Hubei, P.R.C



Immunofluorescence analysis of LOVO cells, using GRM5 Antibody. The picture on the right is blocked with the synthesized peptide.



Western blot analysis of lysates from HT-29 cells, using GRM5 Antibody. The lane on the right is blocked with the synthesized peptide.

