



Melanopsin rabbit pAb

Cat No.:ES2777

For research use only

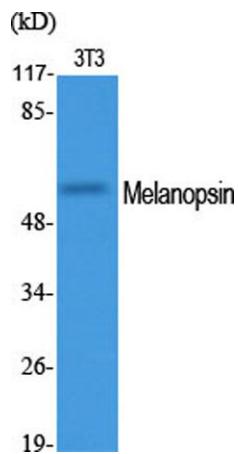
Overview

Product Name	Melanopsin rabbit pAb
Host species	Rabbit
Applications	WB;ELISA;IHC
Species Cross-Reactivity	Human;Rat;Mouse;
Recommended dilutions	WB 1:500-2000;IHC-p 1:50-300; ELISA 2000-20000
Immunogen	The antiserum was produced against synthesized peptide derived from human OPN4. AA range:429-478
Specificity	Melanopsin Polyclonal Antibody detects endogenous levels of Melanopsin protein.
Formulation	Liquid in PBS containing 50% glycerol, 0.5% BSA and 0.02% sodium azide.
Storage	Store at -20°C. Avoid repeated freeze-thaw cycles.
Protein Name	Melanopsin
Gene Name	OPN4
Cellular localization	Cell membrane ; Multi-pass membrane protein . Cell projection, axon . Cell projection, dendrite . Perikaryon .
Purification	The antibody was affinity-purified from rabbit antiserum by affinity-chromatography using epitope-specific immunogen.
Clonality	Polyclonal
Concentration	1 mg/ml
Observed band	55kD
Human Gene ID	94233
Human Swiss-Prot Number	Q9UHM6
Alternative Names	OPN4; MOP; Melanopsin; Opsin-4
Background	Opsins are members of the guanine nucleotide-binding protein (G protein)-coupled receptor superfamily. This gene encodes a photoreceptive opsin protein that is expressed within the ganglion and amacrine cell layers of the retina. In mouse, retinal ganglion cell axons

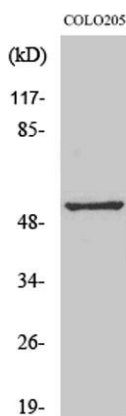




expressing this gene projected to the suprachiasmatic nucleus and other brain nuclei involved in circadian photoentrainment. In mouse, this protein is coupled to a transient receptor potential (TRP) ion channel through a G protein signaling pathway and produces a physiologic light response via membrane depolarization and increased intracellular calcium. The protein functions as a sensory photopigment and may also have photoisomerase activity. Experiments with knockout mice indicate that this gene attenuates, but does not abolish, photoentrainment. Alternative splicing results in multiple transcript variants encoding different isoforms. [provided by Ref



Western Blot analysis of various cells using Melanopsin Polyclonal Antibody

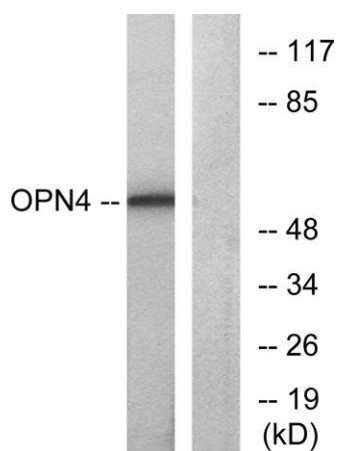


Western Blot analysis of COLO205 cells using Melanopsin Polyclonal Antibody





Western blot analysis of various lysis using Melanopsin Polyclonal Antibody. Secondary antibody(catalog#:RS0002) was diluted at 1:20000



Western blot analysis of lysates from COLO cells, using OPN4 Antibody. The lane on the right is blocked with the synthesized peptide.

