



# MEK-3 rabbit pAb

Cat No.:ES2773

For research use only

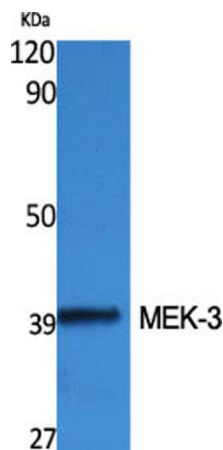
## Overview

<b>Product Name</b>	MEK-3 rabbit pAb
<b>Host species</b>	Rabbit
<b>Applications</b>	WB;ELISA;IHC
<b>Species Cross-Reactivity</b>	Human;Mouse;Rat
<b>Recommended dilutions</b>	WB 1:500-2000;IHC-p 1:50-300; ELISA 2000-20000
<b>Immunogen</b>	The antiserum was produced against synthesized peptide derived from human MAP2K3. AA range:188-237
<b>Specificity</b>	MEK-3 Polyclonal Antibody detects endogenous levels of MEK-3 protein.
<b>Formulation</b>	Liquid in PBS containing 50% glycerol, 0.5% BSA and 0.02% sodium azide.
<b>Storage</b>	Store at -20°C. Avoid repeated freeze-thaw cycles.
<b>Protein Name</b>	Dual specificity mitogen-activated protein kinase kinase 3
<b>Gene Name</b>	MAP2K3
<b>Cellular localization</b>	nucleoplasm,cytoplasm,cytosol,membrane,
<b>Purification</b>	The antibody was affinity-purified from rabbit antiserum by affinity-chromatography using epitope-specific immunogen.
<b>Clonality</b>	Polyclonal
<b>Concentration</b>	1 mg/ml
<b>Observed band</b>	39kD
<b>Human Gene ID</b>	5606
<b>Human Swiss-Prot Number</b>	P46734
<b>Alternative Names</b>	MAP2K3; MEK3; MKK3; PRKMK3; SKK2; Dual specificity mitogen-activated protein kinase kinase 3; MAP kinase kinase 3; MAPKK 3; MAPK/ERK kinase 3; MEK 3; Stress-activated protein kinase kinase 2; SAPK kinase 2; SAPKK-2; SAPKK2
<b>Background</b>	The protein encoded by this gene is a dual specificity protein kinase that belongs to the MAP kinase kinase family. This kinase is activated by mitogenic

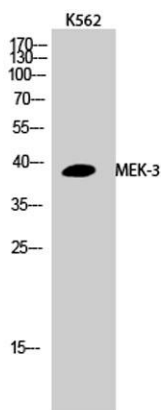




and environmental stress, and participates in the MAP kinase-mediated signaling cascade. It phosphorylates and thus activates MAPK14/p38-MAPK. This kinase can be activated by insulin, and is necessary for the expression of glucose transporter. Expression of RAS oncogene is found to result in the accumulation of the active form of this kinase, which thus leads to the constitutive activation of MAPK14, and confers oncogenic transformation of primary cells. The inhibition of this kinase is involved in the pathogenesis of *Yersinia pseudotuberculosis*. Multiple alternatively spliced transcript variants that encode distinct isoforms have been reported for this gene. [provided by RefSeq, Jul 2008],



Western Blot analysis of various cells using MEK-3 Polyclonal Antibody

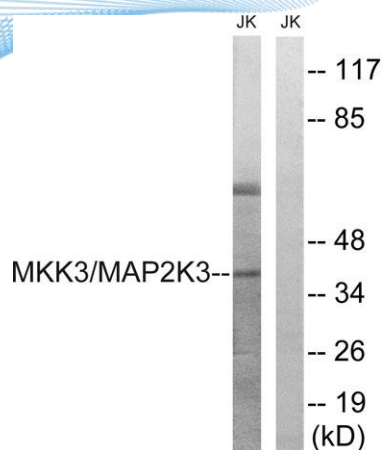


Western Blot analysis of K562 cells using MEK-3 Polyclonal Antibody

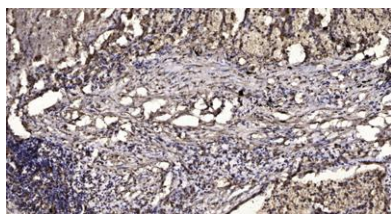




**ELK Biotechnology**



Western blot analysis of lysates from Jurkat cells, treated with serum 20% 15', using MAP2K3 Antibody. The lane on the right is blocked with the synthesized peptide.



Immunohistochemical analysis of paraffin-embedded human Squamous cell carcinoma of lung. 1, Antibody was diluted at 1:200(4° overnight). 2, Tris-EDTA,pH9.0 was used for antigen retrieval. 3,Secondary antibody was diluted at 1:200(room temperature, 45min).



+86-27-59760950

[ELKbio@ELKbiotech.com](mailto:ELKbio@ELKbiotech.com)

[www.elkbiotech.com](http://www.elkbiotech.com)

23-2, No.388 Gaoxin 2nd Road,Wuhan East Lake Hi-tech Development Zone, Hubei , P.R.C