



MDFI rabbit pAb

Cat No.:ES2763

For research use only

Overview

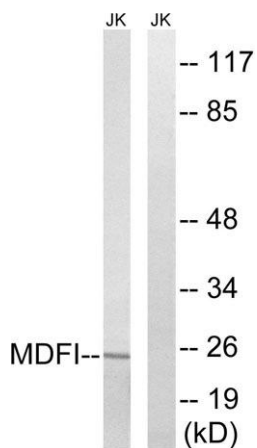
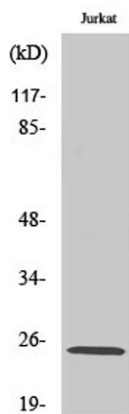
Product Name	MDFI rabbit pAb
Host species	Rabbit
Applications	WB;ELISA
Species Cross-Reactivity	Human;Mouse
Recommended dilutions	Western Blot: 1/500 - 1/2000. ELISA: 1/10000. Not yet tested in other applications.
Immunogen	The antiserum was produced against synthesized peptide derived from human MDFI. AA range:103-152
Specificity	MDFI Polyclonal Antibody detects endogenous levels of MDFI protein.
Formulation	Liquid in PBS containing 50% glycerol, 0.5% BSA and 0.02% sodium azide.
Storage	Store at -20°C. Avoid repeated freeze-thaw cycles.
Protein Name	MyoD family inhibitor
Gene Name	MDFI
Cellular localization	Nucleus . Cytoplasm .
Purification	The antibody was affinity-purified from rabbit antiserum by affinity-chromatography using epitope-specific immunogen.
Clonality	Polyclonal
Concentration	1 mg/ml
Observed band	25kD
Human Gene ID	4188
Human Swiss-Prot Number	Q99750
Alternative Names	MDFI; MyoD family inhibitor; Myogenic repressor I-mf
Background	This protein is a transcription factor that negatively regulates other myogenic family proteins. Studies of the mouse homolog, I-mf, show that it interferes with myogenic factor function by masking nuclear localization signals and preventing DNA binding. Knockout mouse studies show defects in the





formation of vertebrae and ribs that also involve cartilage formation in these structures. [provided by RefSeq, Jul 2008],

Western Blot analysis of various cells using MDFI Polyclonal Antibody



Western blot analysis of lysates from Jurkat cells, using MDFI Antibody. The lane on the right is blocked with the synthesized peptide.

