



# M-cadherin rabbit pAb

Cat No.:ES2759

For research use only

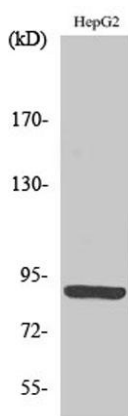
## Overview

|                                 |                                                                                                                                                                                                          |
|---------------------------------|----------------------------------------------------------------------------------------------------------------------------------------------------------------------------------------------------------|
| <b>Product Name</b>             | M-cadherin rabbit pAb                                                                                                                                                                                    |
| <b>Host species</b>             | Rabbit                                                                                                                                                                                                   |
| <b>Applications</b>             | WB;IHC;IF;ELISA                                                                                                                                                                                          |
| <b>Species Cross-Reactivity</b> | Human;Mouse;Rat                                                                                                                                                                                          |
| <b>Recommended dilutions</b>    | Western Blot: 1/500 - 1/2000.<br>Immunohistochemistry: 1/100 - 1/300. ELISA:<br>1/10000. Not yet tested in other applications.                                                                           |
| <b>Immunogen</b>                | The antiserum was produced against synthesized peptide derived from human CDH15. AA range:81-130                                                                                                         |
| <b>Specificity</b>              | M-cadherin Polyclonal Antibody detects endogenous levels of M-cadherin protein.                                                                                                                          |
| <b>Formulation</b>              | Liquid in PBS containing 50% glycerol, 0.5% BSA and 0.02% sodium azide.                                                                                                                                  |
| <b>Storage</b>                  | Store at -20°C. Avoid repeated freeze-thaw cycles.                                                                                                                                                       |
| <b>Protein Name</b>             | Cadherin-15                                                                                                                                                                                              |
| <b>Gene Name</b>                | CDH15                                                                                                                                                                                                    |
| <b>Cellular localization</b>    | Cell membrane; Single-pass type I membrane protein.                                                                                                                                                      |
| <b>Purification</b>             | The antibody was affinity-purified from rabbit antiserum by affinity-chromatography using epitope-specific immunogen.                                                                                    |
| <b>Clonality</b>                | Polyclonal                                                                                                                                                                                               |
| <b>Concentration</b>            | 1 mg/ml                                                                                                                                                                                                  |
| <b>Observed band</b>            | 89kD                                                                                                                                                                                                     |
| <b>Human Gene ID</b>            | 1013                                                                                                                                                                                                     |
| <b>Human Swiss-Prot Number</b>  | P55291                                                                                                                                                                                                   |
| <b>Alternative Names</b>        | CDH15; CDH14; CDH3; Cadherin-15; Cadherin-14; Muscle cadherin; M-cadherin                                                                                                                                |
| <b>Background</b>               | This gene is a member of the cadherin superfamily of genes, encoding calcium-dependent intercellular adhesion glycoproteins. Cadherins consist of an extracellular domain containing 5 cadherin domains, |

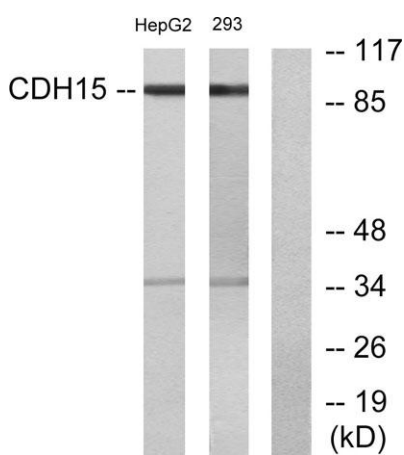




a transmembrane region, and a conserved cytoplasmic domain. Transcripts from this particular cadherin are expressed in myoblasts and upregulated in myotubule-forming cells. The protein is thought to be essential for the control of morphogenetic processes, specifically myogenesis, and may provide a trigger for terminal muscle cell differentiation. [provided by RefSeq, Jul 2008],



Western Blot analysis of various cells using M-cadherin Polyclonal Antibody diluted at 1:500



Western blot analysis of lysates from HepG2 and 293 cells, using CDH15 Antibody. The lane on the right is blocked with the synthesized peptide.

