



Matriptase rabbit pAb

Cat No.:ES2752

For research use only

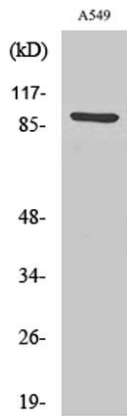
Overview

Product Name	Matriptase rabbit pAb
Host species	Rabbit
Applications	WB;IF;ELISA
Species Cross-Reactivity	Human;Rat;Mouse;
Recommended dilutions	Western Blot: 1/500 - 1/2000. Immunofluorescence: 1/200 - 1/1000. ELISA: 1/10000. Not yet tested in other applications.
Immunogen	The antiserum was produced against synthesized peptide derived from human ST14. AA range:10-59
Specificity	Matriptase Polyclonal Antibody detects endogenous levels of Matriptase protein.
Formulation	Liquid in PBS containing 50% glycerol, 0.5% BSA and 0.02% sodium azide.
Storage	Store at -20°C. Avoid repeated freeze-thaw cycles.
Protein Name	Suppressor of tumorigenicity 14 protein
Gene Name	ST14
Cellular localization	Membrane ; Single-pass type II membrane protein .
Purification	The antibody was affinity-purified from rabbit antiserum by affinity-chromatography using epitope-specific immunogen.
Clonality	Polyclonal
Concentration	1 mg/ml
Observed band	95kD
Human Gene ID	6768
Human Swiss-Prot Number	Q9Y5Y6
Alternative Names	ST14; PRSS14; SNC19; TADG15; Suppressor of tumorigenicity 14 protein; Matriptase; Membrane-type serine protease 1; MT-SP1; Prostamin; Serine protease 14; Serine protease TADG-15; Tumor-associated differentially-expressed gene 15 protein
Background	The protein encoded by this gene is an epithelial-derived, integral membrane serine



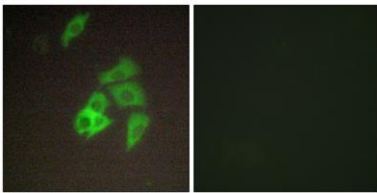


protease. This protease forms a complex with the Kunitz-type serine protease inhibitor, HAI-1, and is found to be activated by sphingosine 1-phosphate. This protease has been shown to cleave and activate hepatocyte growth factor/scattering factor, and urokinase plasminogen activator, which suggest the function of this protease as an epithelial membrane activator for other proteases and latent growth factors. The expression of this protease has been associated with breast, colon, prostate, and ovarian tumors, which implicates its role in cancer invasion, and metastasis. [provided by RefSeq, Jul 2008],



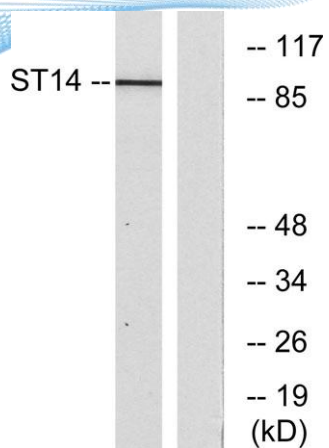
Western Blot analysis of various cells using Matriptase Polyclonal Antibody

Immunofluorescence analysis of A549 cells, using ST14 Antibody. The picture on the right is blocked with the synthesized peptide.





ELK Biotechnology



Western blot analysis of lysates from A549 cells, using ST14 Antibody. The lane on the right is blocked with the synthesized peptide.



+86-27-59760950

ELKbio@ELKbiotech.com

www.elkbiotech.com

23-2, No.388 Gaoxin 2nd Road,Wuhan East Lake Hi-tech Development Zone, Hubei , P.R.C