



MARK1/2/3/4 rabbit pAb

Cat No.:ES2746

For research use only

Overview

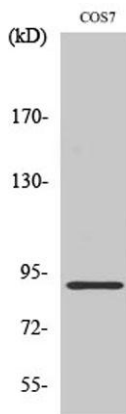
Product Name	MARK1/2/3/4 rabbit pAb
Host species	Rabbit
Applications	WB;IHC;IF;ELISA
Species Cross-Reactivity	Human;Mouse;Rat;Monkey
Recommended dilutions	Western Blot: 1/500 - 1/2000. Immunohistochemistry: 1/100 - 1/300. Immunofluorescence: 1/200 - 1/1000. ELISA: 1/10000. Not yet tested in other applications.
Immunogen	The antiserum was produced against synthesized peptide derived from human MARK1/2/3/4. AA range:181-230
Specificity	MARK1/2/3/4 Polyclonal Antibody detects endogenous levels of MARK1/2/3/4 protein.
Formulation	Liquid in PBS containing 50% glycerol, 0.5% BSA and 0.02% sodium azide.
Storage	Store at -20°C. Avoid repeated freeze-thaw cycles.
Protein Name	Serine/threonine-protein kinase MARK1/2/3/4
Gene Name	MARK1/2/3/4
Cellular localization	Cell membrane ; Peripheral membrane protein . Cytoplasm, cytoskeleton . Cytoplasm . Cell projection, dendrite . Appears to localize to an intracellular network. .
Purification	The antibody was affinity-purified from rabbit antiserum by affinity-chromatography using epitope-specific immunogen.
Clonality	Polyclonal
Concentration	1 mg/ml
Observed band	89kD
Human Gene ID	4139/2011/4140/57787
Human Swiss-Prot Number	Q9P0L2/Q7KZI7/P27448/Q96L34
Alternative Names	MARK1; KIAA1477; MARK; Serine/threonine-protein kinase MARK1; MAP/microtubule affinity-regulating kinase 1; PAR1 homolog c; Par-1c; Par1c; MARK2;





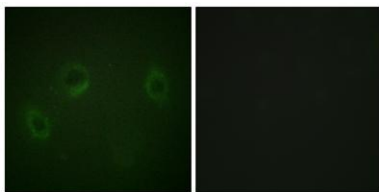
Background

EMK1; Serine/threonine-protein kinase MARK2; ELKL motif kinase 1; EMK-1; MAP/microtubule affinity catalytic activity:ATP + a protein = ADP + a phosphoprotein.,cofactor:Magnesium.,enzyme regulation:Activated by phosphorylation on Thr-215 by STK11 in complex with STE20-related adapter-alpha (STRAD alpha) pseudo kinase and CAB39.,function:May play a role in cytoskeletal stability.,similarity:Belongs to the protein kinase superfamily. CAMK Ser/Thr protein kinase family. MARK subfamily.,similarity:Contains 1 KA1 (kinase-associated) domain.,similarity:Contains 1 protein kinase domain.,similarity:Contains 1 UBA domain.,subcellular location:Appears to localize to an intracellular network.,tissue specificity:Highly expressed in heart, skeletal muscle, brain, fetal brain and fetal kidney.,



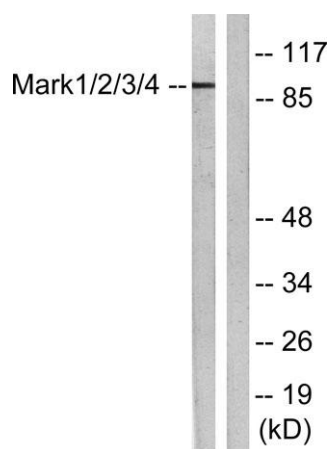
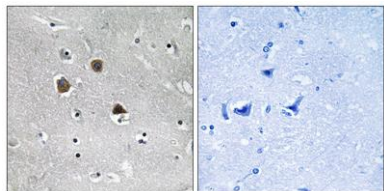
Western Blot analysis of various cells using MARK1/2/3/4 Polyclonal Antibody

Immunofluorescence analysis of HeLa cells, using MARK1/2/3/4 Antibody. The picture on the right is blocked with the synthesized peptide.





Immunohistochemistry analysis of paraffin-embedded human brain tissue, using MARK1/2/3/4 Antibody. The picture on the right is blocked with the synthesized peptide.



Western blot analysis of lysates from COS7 cells, using MARK1/2/3/4 Antibody. The lane on the right is blocked with the synthesized peptide.

