



# Mammaglobin B rabbit pAb

Cat No.:ES2742

For research use only

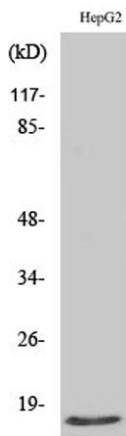
## Overview

<b>Product Name</b>	Mammaglobin B rabbit pAb
<b>Host species</b>	Rabbit
<b>Applications</b>	WB;IHC;IF;ELISA
<b>Species Cross-Reactivity</b>	Human;Rat;Mouse;
<b>Recommended dilutions</b>	Western Blot: 1/500 - 1/2000. Immunohistochemistry: 1/100 - 1/300. Immunofluorescence: 1/200 - 1/1000. ELISA: 1/20000. Not yet tested in other applications.
<b>Immunogen</b>	The antiserum was produced against synthesized peptide derived from human Mammaglobin B. AA range:10-59
<b>Specificity</b>	Mammaglobin B Polyclonal Antibody detects endogenous levels of Mammaglobin B protein.
<b>Formulation</b>	Liquid in PBS containing 50% glycerol, 0.5% BSA and 0.02% sodium azide.
<b>Storage</b>	Store at -20°C. Avoid repeated freeze-thaw cycles.
<b>Protein Name</b>	Mammaglobin-B
<b>Gene Name</b>	SCGB2A1
<b>Cellular localization</b>	Secreted .
<b>Purification</b>	The antibody was affinity-purified from rabbit antiserum by affinity-chromatography using epitope-specific immunogen.
<b>Clonality</b>	Polyclonal
<b>Concentration</b>	1 mg/ml
<b>Observed band</b>	15kD
<b>Human Gene ID</b>	4246
<b>Human Swiss-Prot Number</b>	O75556
<b>Alternative Names</b>	SCGB2A1; LIPHC; MGB2; UGB3; Mammaglobin-B; Lacryglobin; Lipophilin-C; Mammaglobin-2; Secretoglobin family 2A member 1
<b>Background</b>	function:May bind androgens and other steroids, may also bind estramustine, a chemotherapeutic agent used for prostate cancer. May be under



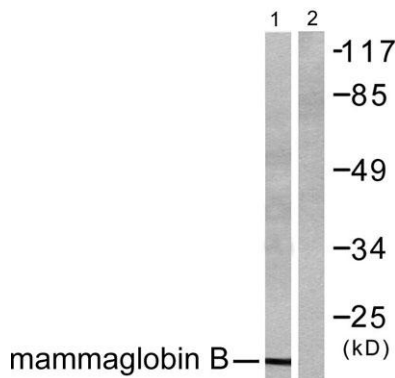
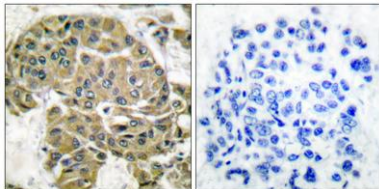


transcriptional regulation of steroid hormones.,mass spectrometry: PubMed:9720917,similarity:Belongs to the secretoglobin family. Lipophilin subfamily.,subunit:Heterodimer of a lipophilin A and a lipophilin C (mammaglobin B) monomer associated head to head.,tissue specificity:Expressed in thymus, trachea, kidney, steroid responsive tissues (prostate, testis, uterus, breast and ovary) and salivary gland.,



Western Blot analysis of various cells using Mammaglobin B Polyclonal Antibody

Immunohistochemistry analysis of paraffin-embedded human breast carcinoma tissue, using Mammaglobin B Antibody. The picture on the right is blocked with the synthesized peptide.



Western blot analysis of lysates from HepG2 cells, using Mammaglobin B Antibody. The lane on the right is blocked with the synthesized peptide.





**ELK Biotechnology**



+86-27-59760950

[ELKbio@ELKbiotech.com](mailto:ELKbio@ELKbiotech.com)

[www.elkbiotech.com](http://www.elkbiotech.com)

23-2, No.388 Gaoxin 2nd Road,Wuhan East Lake Hi-tech Development Zone, Hubei , P.R.C