



MAGE-C2 rabbit pAb

Cat No.:ES2741

For research use only

Overview

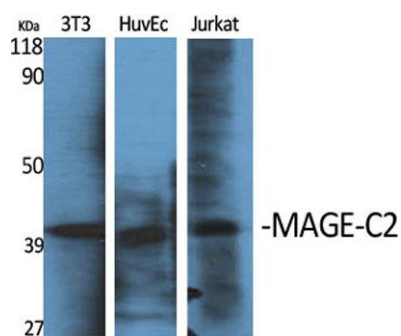
Product Name	MAGE-C2 rabbit pAb
Host species	Rabbit
Applications	WB;ELISA
Species Cross-Reactivity	Human;Rat;Mouse;
Recommended dilutions	Western Blot: 1/500 - 1/2000. ELISA: 1/5000. Not yet tested in other applications.
Immunogen	Synthesized peptide derived from MAGE-C2 . at AA range: 160-240
Specificity	MAGE-C2 Polyclonal Antibody detects endogenous levels of MAGE-C2 protein.
Formulation	Liquid in PBS containing 50% glycerol, 0.5% BSA and 0.02% sodium azide.
Storage	Store at -20°C. Avoid repeated freeze-thaw cycles.
Protein Name	Melanoma-associated antigen C2
Gene Name	MAGEC2
Cellular localization	Cytoplasm . Nucleus . Nuclear in germ cells. Cytoplasmic in well-differentiated hepatocellular carcinoma, nuclear in moderately- and poorly-differentiated hepatocellular carcinoma.
Purification	The antibody was affinity-purified from rabbit antiserum by affinity-chromatography using epitope-specific immunogen.
Clonality	Polyclonal
Concentration	1 mg/ml
Observed band	41kD
Human Gene ID	51438
Human Swiss-Prot Number	Q9UBF1
Alternative Names	MAGEC2; HCA587; MAGEE1; Melanoma-associated antigen C2; Cancer/testis antigen 10; CT10; Hepatocellular carcinoma-associated antigen 587; MAGE-C2 antigen; MAGE-E1 antigen
Background	This gene is a member of the MAGEC gene family. It is not expressed in normal tissues, except for testis,



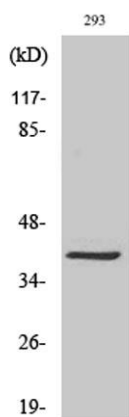


and is expressed in tumors of various histological types. This gene and the other MAGEC genes are clustered on chromosome Xq26-q27. [provided by RefSeq, Oct 2009],

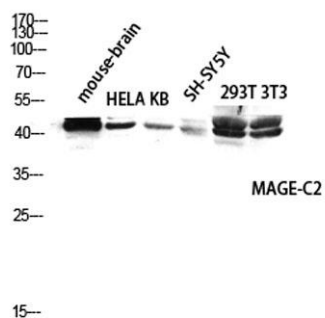
Western Blot analysis of various cells using MAGE-C2
Polyclonal Antibody diluted at 1:1000



Western Blot analysis of 293 cells using MAGE-C2
Polyclonal Antibody diluted at 1:1000

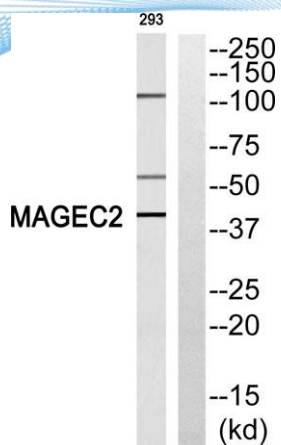


Western blot analysis of mouse-brain HELA KB SH-SY5Y
293T 3T3 lysis using MAGE-C2 antibody. Antibody was
diluted at 1:1000





ELK Biotechnology



Western blot analysis of MAGEC2 Antibody. The lane on the right is blocked with the MAGEC2 peptide.



+86-27-59760950

ELKbio@ELKbiotech.com

www.elkbiotech.com

23-2, No.388 Gaoxin 2nd Road,Wuhan East Lake Hi-tech Development Zone, Hubei , P.R.C