



# MAD2 rabbit pAb

Cat No.:ES2738

For research use only

## Overview

<b>Product Name</b>	MAD2 rabbit pAb
<b>Host species</b>	Rabbit
<b>Applications</b>	WB;IP;ELISA
<b>Species Cross-Reactivity</b>	Human;Rat;Mouse;
<b>Recommended dilutions</b>	Western Blot: 1/500 - 1/2000. IP 1:200-500 ELISA: 1/5000. Not yet tested in other applications.
<b>Immunogen</b>	The antiserum was produced against synthesized peptide derived from human MAD2L1. AA range:91-140
<b>Specificity</b>	MAD2 Polyclonal Antibody detects endogenous levels of MAD2 protein.
<b>Formulation</b>	Liquid in PBS containing 50% glycerol, 0.5% BSA and 0.02% sodium azide.
<b>Storage</b>	Store at -20°C. Avoid repeated freeze-thaw cycles.
<b>Protein Name</b>	Mitotic spindle assembly checkpoint protein MAD2A
<b>Gene Name</b>	MAD2L1
<b>Cellular localization</b>	Nucleus . Chromosome, centromere, kinetochore. Cytoplasm . Cytoplasm, cytoskeleton, spindle pole. Recruited by MAD1L1 to unattached kinetochores (Probable). Recruited to the nuclear pore complex by TPR during interphase. Recruited to kinetochores in late prometaphase after BUB1, CENPF, BUB1B and CENPE. Kinetochore association requires the presence of NEK2. Kinetochore association is repressed by UBD. Sequestered to the cytoplasm upon interaction with isoform 3 of MAD1L1 (PubMed:19010891). .
<b>Purification</b>	The antibody was affinity-purified from rabbit antiserum by affinity-chromatography using epitope-specific immunogen.
<b>Clonality</b>	Polyclonal
<b>Concentration</b>	1 mg/ml
<b>Observed band</b>	25kD





**Human Gene ID**

4085

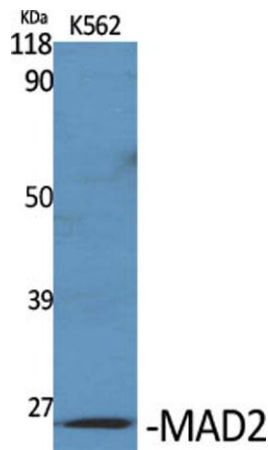
**Human Swiss-Prot Number**

Q13257

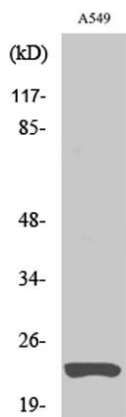
**Alternative Names**

MAD2L1; MAD2; Mitotic spindle assembly checkpoint protein MAD2A; HsMAD2; Mitotic arrest deficient 2-like protein 1; MAD2-like protein 1  
MAD2L1 is a component of the mitotic spindle assembly checkpoint that prevents the onset of anaphase until all chromosomes are properly aligned at the metaphase plate. MAD2L1 is related to the MAD2L2 gene located on chromosome 1. A MAD2 pseudogene has been mapped to chromosome 14. [provided by RefSeq, Jul 2008],

**Background**

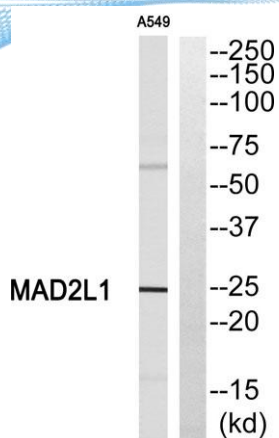


Western Blot analysis of various cells using MAD2  
Polyclonal Antibody diluted at 1:1000

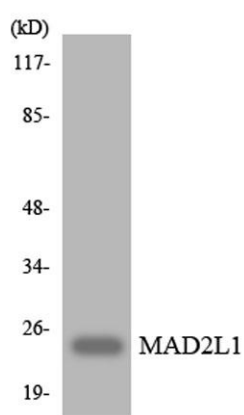


Western Blot analysis of A549 cells using MAD2 Polyclonal  
Antibody diluted at 1:1000





Western blot analysis of MAD2L1 Antibody. The lane on the right is blocked with the MAD2L1 peptide.



Western blot analysis of the lysates from HUVEC cells using MAD2L1 antibody.

