



# mAChR M4 rabbit pAb

Cat No.:ES2737

For research use only

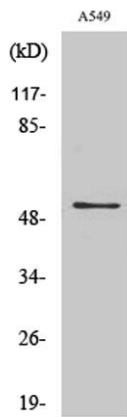
## Overview

<b>Product Name</b>	mAChR M4 rabbit pAb
<b>Host species</b>	Rabbit
<b>Applications</b>	WB;IF;ELISA
<b>Species Cross-Reactivity</b>	Human;Mouse;Rat
<b>Recommended dilutions</b>	Western Blot: 1/500 - 1/2000. Immunofluorescence: 1/200 - 1/1000. ELISA: 1/10000. Not yet tested in other applications.
<b>Immunogen</b>	The antiserum was produced against synthesized peptide derived from human CHRM4. AA range:236-285
<b>Specificity</b>	mAChR M4 Polyclonal Antibody detects endogenous levels of mAChR M4 protein.
<b>Formulation</b>	Liquid in PBS containing 50% glycerol, 0.5% BSA and 0.02% sodium azide.
<b>Storage</b>	Store at -20°C. Avoid repeated freeze-thaw cycles.
<b>Protein Name</b>	Muscarinic acetylcholine receptor M4
<b>Gene Name</b>	CHRM4
<b>Cellular localization</b>	Cell membrane; Multi-pass membrane protein. Cell junction, synapse, postsynaptic cell membrane; Multi-pass membrane protein.
<b>Purification</b>	The antibody was affinity-purified from rabbit antiserum by affinity-chromatography using epitope-specific immunogen.
<b>Clonality</b>	Polyclonal
<b>Concentration</b>	1 mg/ml
<b>Observed band</b>	53kD
<b>Human Gene ID</b>	1132
<b>Human Swiss-Prot Number</b>	P08173
<b>Alternative Names</b>	CHRM4; Muscarinic acetylcholine receptor M4
<b>Background</b>	The muscarinic cholinergic receptors belong to a larger family of G protein-coupled receptors. The functional diversity of these receptors is defined by the binding of acetylcholine and includes cellular





responses such as adenylate cyclase inhibition, phosphoinositide degeneration, and potassium channel mediation. Muscarinic receptors influence many effects of acetylcholine in the central and peripheral nervous system. The clinical implications of this receptor are unknown; however, mouse studies link its function to adenylyl cyclase inhibition. [provided by RefSeq, Jul 2008],



Western Blot analysis of various cells using mAChR M4 Polyclonal Antibody

Immunofluorescence analysis of LOVO cells, using CHR M4 Antibody. The picture on the right is blocked with the synthesized peptide.

