



LRG1 rabbit pAb

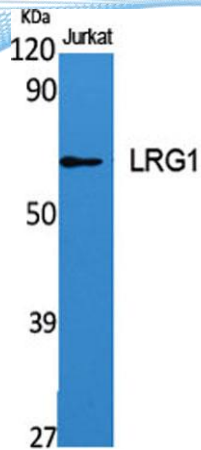
Cat No.:ES2725

For research use only

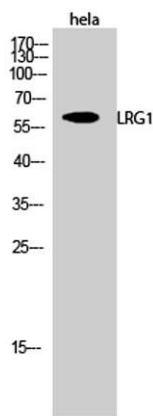
Overview

| | |
|---------------------------------|--|
| Product Name | LRG1 rabbit pAb |
| Host species | Rabbit |
| Applications | WB;ELISA;IHC |
| Species Cross-Reactivity | Human;Rat;Mouse; |
| Recommended dilutions | WB 1:500-2000;IHC-p 1:50-300; ELISA 2000-20000 |
| Immunogen | Synthesized peptide derived from the C-terminal region of human LRG1. |
| Specificity | LRG1 Polyclonal Antibody detects endogenous levels of LRG1 protein. |
| Formulation | Liquid in PBS containing 50% glycerol, 0.5% BSA and 0.02% sodium azide. |
| Storage | Store at -20°C. Avoid repeated freeze-thaw cycles. |
| Protein Name | Leucine-rich alpha-2-glycoprotein |
| Gene Name | LRG1 |
| Cellular localization | Secreted. |
| Purification | The antibody was affinity-purified from rabbit antiserum by affinity-chromatography using epitope-specific immunogen. |
| Clonality | Polyclonal |
| Concentration | 1 mg/ml |
| Observed band | 58kD |
| Human Gene ID | 116844 |
| Human Swiss-Prot Number | P02750 |
| Alternative Names | LRG1; LRG; Leucine-rich alpha-2-glycoprotein; LRG |
| Background | The leucine-rich repeat (LRR) family of proteins, including LRG1, have been shown to be involved in protein-protein interaction, signal transduction, and cell adhesion and development. LRG1 is expressed during granulocyte differentiation (O'Donnell et al., 2002 [PubMed 12223515]).[supplied by OMIM, Mar 2008], |

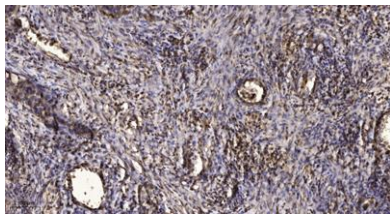




Western Blot analysis of various cells using LRG1 Polyclonal Antibody



Western Blot analysis of hela cells using LRG1 Polyclonal Antibody



Immunohistochemical analysis of paraffin-embedded human Squamous cell carcinoma of lung. 1, Antibody was diluted at 1:200(4° overnight). 2, Tris-EDTA,pH9.0 was used for antigen retrieval. 3,Secondary antibody was diluted at 1:200(room temperature, 45min).

