



# Liprin $\beta$ 1 rabbit pAb

Cat No.:ES2714

For research use only

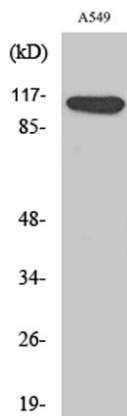
## Overview

<b>Product Name</b>	Liprin $\beta$ 1 rabbit pAb
<b>Host species</b>	Rabbit
<b>Applications</b>	WB;IHC
<b>Species Cross-Reactivity</b>	Human;Mouse
<b>Recommended dilutions</b>	WB 1:500-2000;IHC-p 1:50-300
<b>Immunogen</b>	The antiserum was produced against synthesized peptide derived from human LIPB1. AA range:300-349
<b>Specificity</b>	Liprin $\beta$ 1 Polyclonal Antibody detects endogenous levels of Liprin $\beta$ 1 protein.
<b>Formulation</b>	Liquid in PBS containing 50% glycerol, 0.5% BSA and 0.02% sodium azide.
<b>Storage</b>	Store at $-20^{\circ}\text{C}$ . Avoid repeated freeze-thaw cycles.
<b>Protein Name</b>	Liprin-beta-1
<b>Gene Name</b>	PPFIBP1
<b>Cellular localization</b>	plasma membrane,cell-cell adherens junction,focal adhesion,
<b>Purification</b>	The antibody was affinity-purified from rabbit antiserum by affinity-chromatography using epitope-specific immunogen.
<b>Clonality</b>	Polyclonal
<b>Concentration</b>	1 mg/ml
<b>Observed band</b>	115kD
<b>Human Gene ID</b>	8496
<b>Human Swiss-Prot Number</b>	Q86W92
<b>Alternative Names</b>	PPFIBP1; KIAA1230; Liprin-beta-1; Protein tyrosine phosphatase receptor type f polypeptide-interacting protein-binding protein 1; PTPRF-interacting protein-binding protein 1; hSGT2
<b>Background</b>	The protein encoded by this gene is a member of the LAR protein-tyrosine phosphatase-interacting protein (liprin) family. Liprins interact with members of LAR family of transmembrane protein tyrosine

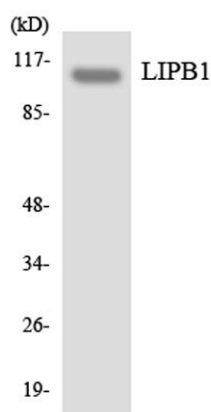




phosphatases, which are known to be important for axon guidance and mammary gland development. It has been proposed that liprins are multivalent proteins that form complex structures and act as scaffolds for the recruitment and anchoring of LAR family of tyrosine phosphatases. This protein was found to interact with S100A4, a calcium-binding protein related to tumor invasiveness and metastasis. In vitro experiment demonstrated that the interaction inhibited the phosphorylation of this protein by protein kinase C and protein kinase CK2. Alternatively spliced transcript variants encoding distinct isoforms have been reported. [provided by RefSeq, Jul 2008],



Western Blot analysis of various cells using Liprin  $\beta$ 1 Polyclonal Antibody diluted at 1:2000

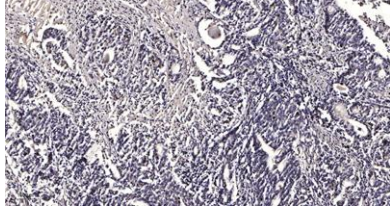


Western blot analysis of the lysates from COLO205 cells using LIPB1 antibody.





**ELK Biotechnology**



Immunohistochemical analysis of paraffin-embedded human Gastric adenocarcinoma. 1, Antibody was diluted at 1:200(4° overnight). 2, Tris-EDTA,pH9.0 was used for antigen retrieval. 3,Secondary antibody was diluted at 1:200(room temperature, 45min).



+86-27-59760950

[ELKbio@ELKbiotech.com](mailto:ELKbio@ELKbiotech.com)

[www.elkbiotech.com](http://www.elkbiotech.com)

23-2, No.388 Gaoxin 2nd Road,Wuhan East Lake Hi-tech Development Zone, Hubei , P.R.C