



LGR6 rabbit pAb

Cat No.:ES2710

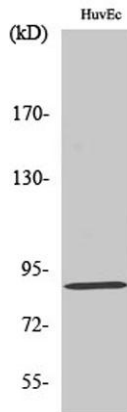
For research use only

Overview

Product Name	LGR6 rabbit pAb
Host species	Rabbit
Applications	WB;IHC
Species Cross-Reactivity	Human;Rat;Mouse;
Recommended dilutions	WB 1:500-2000;IHC-p 1:50-300
Immunogen	The antiserum was produced against synthesized peptide derived from human LGR6. AA range:471-520
Specificity	LGR6 Polyclonal Antibody detects endogenous levels of LGR6 protein.
Formulation	Liquid in PBS containing 50% glycerol, 0.5% BSA and 0.02% sodium azide.
Storage	Store at -20°C. Avoid repeated freeze-thaw cycles.
Protein Name	Leucine-rich repeat-containing G-protein coupled receptor 6
Gene Name	LGR6
Cellular localization	Cell membrane ; Multi-pass membrane protein .
Purification	The antibody was affinity-purified from rabbit antiserum by affinity-chromatography using epitope-specific immunogen.
Clonality	Polyclonal
Concentration	1 mg/ml
Observed band	104kD
Human Gene ID	59352
Human Swiss-Prot Number	Q9HBX8
Alternative Names	LGR6; Leucine-rich repeat-containing G-protein coupled receptor 6
Background	This gene encodes a member of the leucine-rich repeat-containing subgroup of the G protein-coupled 7-transmembrane protein superfamily. The encoded protein is a glycoprotein hormone receptor with a large N-terminal extracellular domain that contains leucine-rich

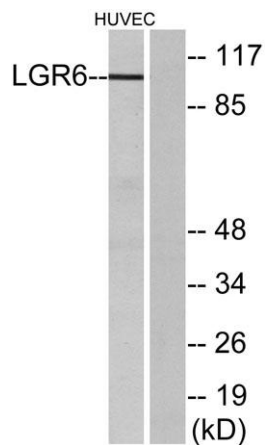
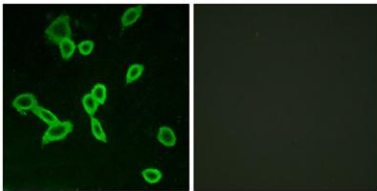


repeats important for the formation of a horseshoe-shaped interaction motif for ligand binding. Alternative splicing of this gene results in multiple transcript variants. [provided by RefSeq, Jul 2008],



Western Blot analysis of various cells using LGR6 Polyclonal Antibody diluted at 1:500

Immunofluorescence analysis of LOVO cells, using LGR6 Antibody. The picture on the right is blocked with the synthesized peptide.

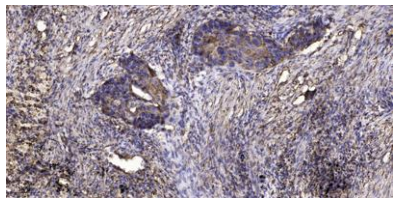


Western blot analysis of lysates from HUVEC cells, using LGR6 Antibody. The lane on the right is blocked with the synthesized peptide.





ELK Biotechnology



Immunohistochemical analysis of paraffin-embedded human Squamous cell carcinoma of lung. 1, Antibody was diluted at 1:200(4° overnight). 2, Tris-EDTA,pH9.0 was used for antigen retrieval. 3,Secondary antibody was diluted at 1:200(room temperature, 45min).



+86-27-59760950

ELKbio@ELKbiotech.com

www.elkbiotech.com

23-2, No.388 Gaoxin 2nd Road,Wuhan East Lake Hi-tech Development Zone, Hubei , P.R.C