



LDLRAD2 rabbit pAb

Cat No.:ES2707

For research use only

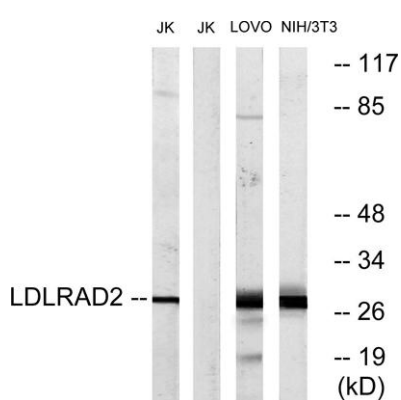
Overview

Product Name	LDLRAD2 rabbit pAb
Host species	Rabbit
Applications	WB;ELISA;IHC
Species Cross-Reactivity	Human;Rat;Mouse;
Recommended dilutions	WB 1:500-2000;IHC-p 1:50-300; ELISA 2000-20000
Immunogen	The antiserum was produced against synthesized peptide derived from human LDLRAD2. AA range:130-179
Specificity	LDLRAD2 Polyclonal Antibody detects endogenous levels of LDLRAD2 protein.
Formulation	Liquid in PBS containing 50% glycerol, 0.5% BSA and 0.02% sodium azide.
Storage	Store at -20°C. Avoid repeated freeze-thaw cycles.
Protein Name	Low-density lipoprotein receptor class A domain-containing protein 2
Gene Name	LDLRAD2
Cellular localization	Membrane; Single-pass type I membrane protein.
Purification	The antibody was affinity-purified from rabbit antiserum by affinity-chromatography using epitope-specific immunogen.
Clonality	Polyclonal
Concentration	1 mg/ml
Observed band	29kD
Human Gene ID	401944
Human Swiss-Prot Number	Q5SZI1
Alternative Names	LDLRAD2; Low-density lipoprotein receptor class A domain-containing protein 2
Background	similarity:Belongs to the LDLR family.,similarity:Contains 1 LDL-receptor class A domain.,

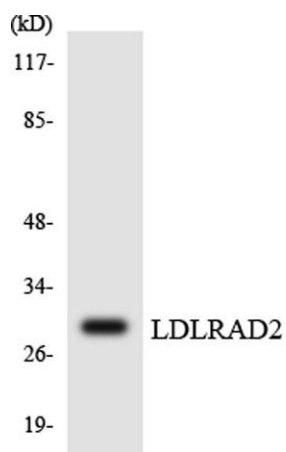




Western Blot analysis of various cells using LDLRAD2 Polyclonal Antibody diluted at 1:500



Western blot analysis of lysates from Jurkat, LOVO, and NIH/3T3 cells, using LDLRAD2 Antibody. The lane on the right is blocked with the synthesized peptide.

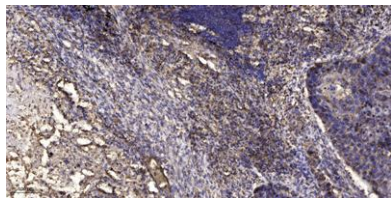


Western blot analysis of the lysates from HepG2 cells using LDLRAD2 antibody.





ELK Biotechnology



Immunohistochemical analysis of paraffin-embedded human Squamous cell carcinoma of lung. 1, Antibody was diluted at 1:200(4° overnight). 2, Tris-EDTA,pH9.0 was used for antigen retrieval. 3,Secondary antibody was diluted at 1:200(room temperature, 45min).



+86-27-59760950

ELKbio@ELKbiotech.com

www.elkbiotech.com

23-2, No.388 Gaoxin 2nd Road,Wuhan East Lake Hi-tech Development Zone, Hubei , P.R.C