



LDLRAD1 rabbit pAb

Cat No.:ES2706

For research use only

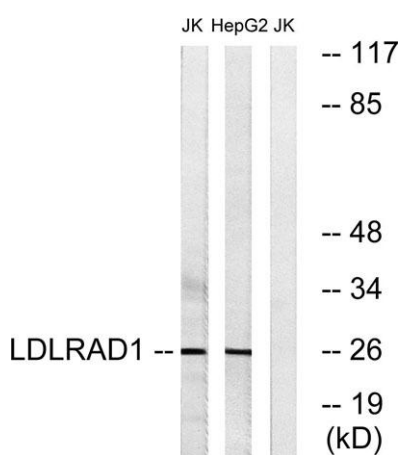
Overview

Product Name	LDLRAD1 rabbit pAb
Host species	Rabbit
Applications	WB;ELISA;IHC
Species Cross-Reactivity	Human;Rat;Mouse;
Recommended dilutions	WB 1:500-2000;IHC-p 1:50-300; ELISA 2000-20000
Immunogen	The antiserum was produced against synthesized peptide derived from human LDLRAD1. AA range:84-133
Specificity	LDLRAD1 Polyclonal Antibody detects endogenous levels of LDLRAD1 protein.
Formulation	Liquid in PBS containing 50% glycerol, 0.5% BSA and 0.02% sodium azide.
Storage	Store at -20°C. Avoid repeated freeze-thaw cycles.
Protein Name	Low-density lipoprotein receptor class A domain-containing protein 1
Gene Name	LDLRAD1
Cellular localization	Membrane ; Single-pass membrane protein .
Purification	The antibody was affinity-purified from rabbit antiserum by affinity-chromatography using epitope-specific immunogen.
Clonality	Polyclonal
Concentration	1 mg/ml
Observed band	26kD
Human Gene ID	388633
Human Swiss-Prot Number	Q5T700
Alternative Names	LDLRAD1; Low-density lipoprotein receptor class A domain-containing protein 1
Background	similarity:Belongs to the LDLR family.,similarity:Contains 3 LDL-receptor class A domains.,

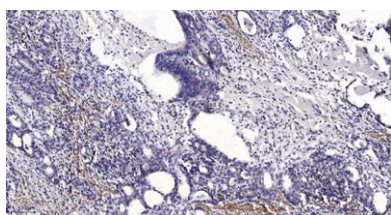




Western Blot analysis of various cells using LDLRAD1 Polyclonal Antibody



Western blot analysis of lysates from Jurkat and HepG2 cells, using LDLRAD1 Antibody. The lane on the right is blocked with the synthesized peptide.



Immunohistochemical analysis of paraffin-embedded human Gastric adenocarcinoma. 1, Antibody was diluted at 1:200(4° overnight). 2, Tris-EDTA,pH9.0 was used for antigen retrieval. 3,Secondary antibody was diluted at 1:200(room temperature, 45min).

