



LASS4 rabbit pAb

Cat No.:ES2701

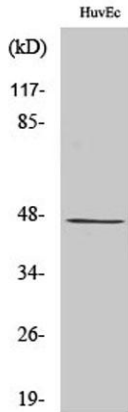
For research use only

Overview

Product Name	LASS4 rabbit pAb
Host species	Rabbit
Applications	WB;IHC;IF;ELISA
Species Cross-Reactivity	Human;Rat;Mouse;
Recommended dilutions	Western Blot: 1/500 - 1/2000. Immunohistochemistry: 1/100 - 1/300. ELISA: 1/10000. Not yet tested in other applications.
Immunogen	The antiserum was produced against synthesized peptide derived from human LASS4. AA range:41-90
Specificity	LASS4 Polyclonal Antibody detects endogenous levels of LASS4 protein.
Formulation	Liquid in PBS containing 50% glycerol, 0.5% BSA and 0.02% sodium azide.
Storage	Store at -20°C. Avoid repeated freeze-thaw cycles.
Protein Name	Ceramide synthase 4
Gene Name	CERS4
Cellular localization	Endoplasmic reticulum membrane ; Multi-pass membrane protein .
Purification	The antibody was affinity-purified from rabbit antiserum by affinity-chromatography using epitope-specific immunogen.
Clonality	Polyclonal
Concentration	1 mg/ml
Observed band	46kD
Human Gene ID	79603
Human Swiss-Prot Number	Q9HA82
Alternative Names	CERS4; LASS4; Ceramide synthase 4; CerS4; LAG1 longevity assurance homolog 4
Background	function:May be either a bona fide (dihydro)ceramide synthase or a modulator of its activity. When overexpressed in cells is involved in the production of sphingolipids containing different fatty acid donors (N-linked stearyl- (C18) or

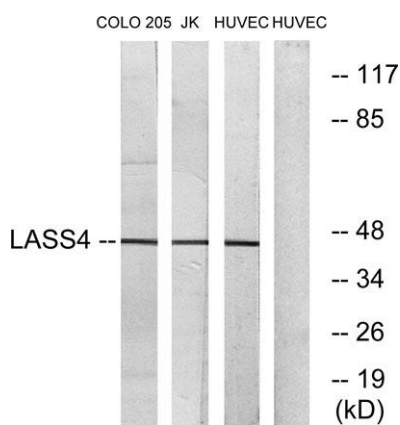
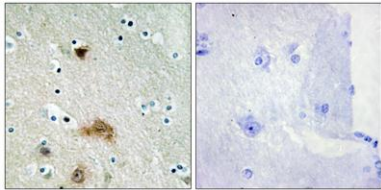


arachidoyl- (C20) ceramides) in a fumonisin B1-independent manner.,similarity:Contains 1 homeobox DNA-binding domain.,similarity:Contains 1 TLC (TRAM/LAG1/CLN8) domain.,



Western Blot analysis of various cells using LASS4 Polyclonal Antibody

Immunohistochemistry analysis of paraffin-embedded human brain tissue, using LASS4 Antibody. The picture on the right is blocked with the synthesized peptide.



Western blot analysis of lysates from HUVEC, COLO, and Jurkat cells, using LASS4 Antibody. The lane on the right is blocked with the synthesized peptide.

