



KV9.2 rabbit pAb

Cat No.:ES2692

For research use only

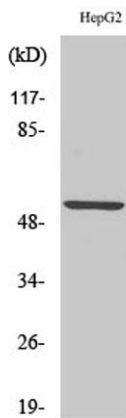
Overview

Product Name	KV9.2 rabbit pAb
Host species	Rabbit
Applications	WB;IHC
Species Cross-Reactivity	Human;Mouse;Rat
Recommended dilutions	WB 1:500-2000;IHC-p 1:50-300
Immunogen	The antiserum was produced against synthesized peptide derived from human KCNS2. AA range:197-246
Specificity	KV9.2 Polyclonal Antibody detects endogenous levels of KV9.2 protein.
Formulation	Liquid in PBS containing 50% glycerol, 0.5% BSA and 0.02% sodium azide.
Storage	Store at -20°C. Avoid repeated freeze-thaw cycles.
Protein Name	Potassium voltage-gated channel subfamily S member 2
Gene Name	KCNS2
Cellular localization	Cell membrane ; Multi-pass membrane protein . May not reach the plasma membrane but remain in an intracellular compartment in the absence of KCNB1 or KCNB2. .
Purification	The antibody was affinity-purified from rabbit antiserum by affinity-chromatography using epitope-specific immunogen.
Clonality	Polyclonal
Concentration	1 mg/ml
Observed band	54kD
Human Gene ID	3788
Human Swiss-Prot Number	Q9ULS6
Alternative Names	KCNS2; KIAA1144; Potassium voltage-gated channel subfamily S member 2; Delayed-rectifier K(+) channel alpha subunit 2; Voltage-gated potassium channel subunit Kv9.2
Background	domain:The segment S4 is probably the

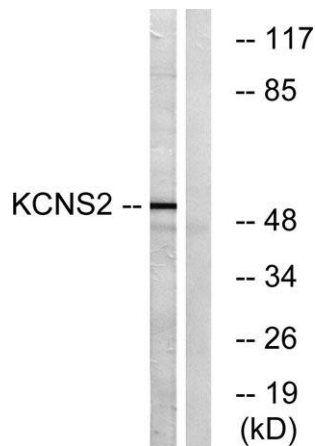




voltage-sensor and is characterized by a series of positively charged amino acids at every third position.,function:Potassium channel subunit. Modulates channel activity and reduces the ion flow.,similarity:Belongs to the potassium channel family. S subfamily.,subcellular location:May not reach the plasma membrane but remain in an intracellular compartment in the absence of KCNB1.,subunit:Heteromultimer with KCNB1 and with KCNB2. Does not form homomultimers. Might also bind to other channel proteins.,



Western Blot analysis of various cells using KV9.2 Polyclonal Antibody

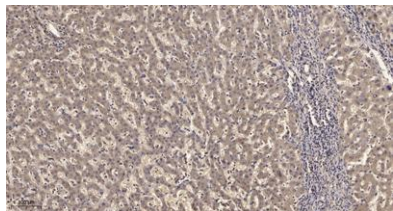


Western blot analysis of lysates from HepG2 cells, using KCNS2 Antibody. The lane on the right is blocked with the synthesized peptide.





ELK Biotechnology



Immunohistochemical analysis of paraffin-embedded human liver cancer. 1, Antibody was diluted at 1:200(4° overnight). 2, Tris-EDTA,pH9.0 was used for antigen retrieval. 3,Secondary antibody was diluted at 1:200(room temperature, 45min).



+86-27-59760950

ELKbio@ELKbiotech.com

www.elkbiotech.com

23-2, No.388 Gaoxin 2nd Road,Wuhan East Lake Hi-tech Development Zone, Hubei , P.R.C