



KV3.1 rabbit pAb

Cat No.:ES2689

For research use only

Overview

Product Name	KV3.1 rabbit pAb
Host species	Rabbit
Applications	WB;IHC;IF;ELISA
Species Cross-Reactivity	Human;Mouse;Rat
Recommended dilutions	Western Blot: 1/500 - 1/2000. Immunohistochemistry: 1/100 - 1/300. ELISA: 1/5000. Not yet tested in other applications.
Immunogen	Synthesized peptide derived from KV3.1 . at AA range: 190-270
Specificity	KV3.1 Polyclonal Antibody detects endogenous levels of KV3.1 protein.
Formulation	Liquid in PBS containing 50% glycerol, 0.5% BSA and 0.02% sodium azide.
Storage	Store at -20°C. Avoid repeated freeze-thaw cycles.
Protein Name	Potassium voltage-gated channel subfamily C member 1
Gene Name	KCNC1
Cellular localization	Cell membrane ; Multi-pass membrane protein . Cell projection, axon . Cell junction, synapse, presynaptic cell membrane . Localizes in parallel fiber membranes, distributed on the perisynaptic and extrasynaptic membranes away from the active zones. .
Purification	The antibody was affinity-purified from rabbit antiserum by affinity-chromatography using epitope-specific immunogen.
Clonality	Polyclonal
Concentration	1 mg/ml
Observed band	60kD
Human Gene ID	3746
Human Swiss-Prot Number	P48547
Alternative Names	KCNC1; Potassium voltage-gated channel subfamily C member 1; NGK2; Voltage-gated potassium

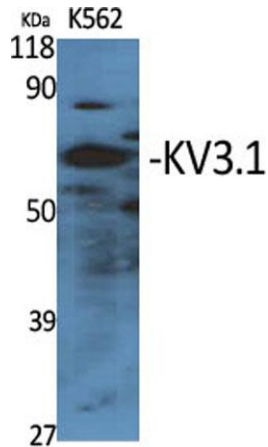




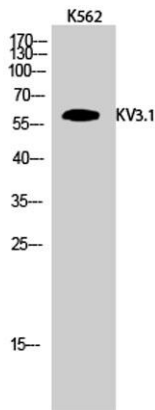
Background

channel subunit Kv3.1; Voltage-gated potassium channel subunit Kv4

This gene encodes a member of a family of integral membrane proteins that mediate the voltage-dependent potassium ion permeability of excitable membranes. Alternative splicing is thought to result in two transcript variants encoding isoforms that differ at their C-termini. These isoforms have had conflicting names in the literature: the longer isoform has been called both "b" and "alpha", while the shorter isoform has been called both "a" and "beta" (PMIDs 1432046, 12091563). [provided by RefSeq, Oct 2014],



Western Blot analysis of various cells using KV3.1 Polyclonal Antibody

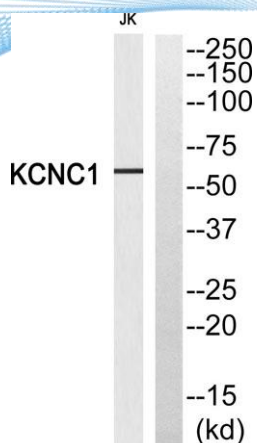


Western Blot analysis of K562 cells using KV3.1 Polyclonal Antibody



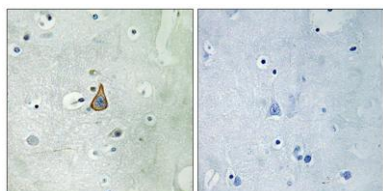


ELK Biotechnology



Western blot analysis of KCNC1 Antibody. The lane on the right is blocked with the KCNC1 peptide.

Immunohistochemistry analysis of paraffin-embedded human brain, using KCNC1 Antibody. The lane on the right is blocked with the KCNC1 peptide.



+86-27-59760950

ELKbio@ELKbiotech.com

www.elkbiotech.com

23-2, No.388 Gaoxin 2nd Road,Wuhan East Lake Hi-tech Development Zone, Hubei , P.R.C