



# KOX17 rabbit pAb

Cat No.:ES2680

For research use only

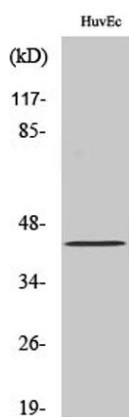
## Overview

<b>Product Name</b>	KOX17 rabbit pAb
<b>Host species</b>	Rabbit
<b>Applications</b>	WB;IHC;IF;ELISA
<b>Species Cross-Reactivity</b>	Human;Mouse;Rat
<b>Recommended dilutions</b>	Western Blot: 1/500 - 1/2000. Immunohistochemistry: 1/100 - 1/300. ELISA: 1/10000. Not yet tested in other applications.
<b>Immunogen</b>	The antiserum was produced against synthesized peptide derived from human ZNF24. AA range:10-59
<b>Specificity</b>	KOX17 Polyclonal Antibody detects endogenous levels of KOX17 protein.
<b>Formulation</b>	Liquid in PBS containing 50% glycerol, 0.5% BSA and 0.02% sodium azide.
<b>Storage</b>	Store at -20°C. Avoid repeated freeze-thaw cycles.
<b>Protein Name</b>	Zinc finger protein 24
<b>Gene Name</b>	ZNF24
<b>Cellular localization</b>	Nucleus .
<b>Purification</b>	The antibody was affinity-purified from rabbit antiserum by affinity-chromatography using epitope-specific immunogen.
<b>Clonality</b>	Polyclonal
<b>Concentration</b>	1 mg/ml
<b>Observed band</b>	48kD
<b>Human Gene ID</b>	7572
<b>Human Swiss-Prot Number</b>	P17028
<b>Alternative Names</b>	ZNF24; KOX17; ZNF191; ZSCAN3; Zinc finger protein 24; Retinoic acid suppression protein A; RSG-A; Zinc finger and SCAN domain-containing protein 3; Zinc finger protein 191; Zinc finger protein KOX17
<b>Background</b>	function:May function as a transcription factor. Seems to repress transcription.,PTM:Phosphorylated upon DNA damage, probably by ATM or ATR.,PTM:Sumoylated.,similarity:Belongs to the

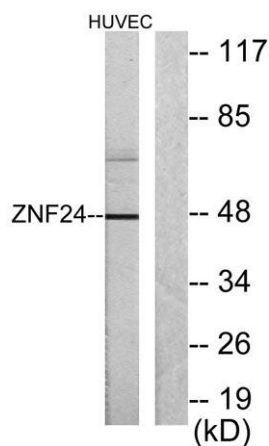




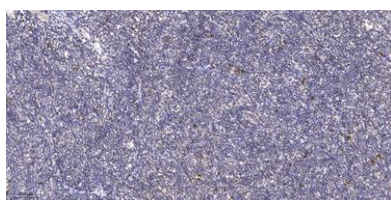
krueppel C2H2-type zinc-finger protein family.,similarity:Contains 1 SCAN box domain.,similarity:Contains 4 C2H2-type zinc fingers.,tissue specificity:Expressed in many tissues except in heart.,



Western Blot analysis of various cells using KOX17 Polyclonal Antibody cells nucleus extracted by Minute TM Cytoplasmic and Nuclear Fractionation kit (SC-003,Inventbiotech,MN,USA).



Western blot analysis of lysates from HUVEC cells, using ZNF24 Antibody. The lane on the right is blocked with the synthesized peptide.



Immunohistochemical analysis of paraffin-embedded human tonsil. 1, Antibody was diluted at 1:200(4° overnight). 2, Tris-EDTA,pH9.0 was used for antigen retrieval. 3,Secondary antibody was diluted at 1:200(room temperature, 45min).

