



KALIG-1 rabbit pAb

Cat No.:ES2666

For research use only

Overview

Product Name	KALIG-1 rabbit pAb
Host species	Rabbit
Applications	WB;IHC
Species Cross-Reactivity	Human;Rat;Mouse;
Recommended dilutions	WB 1:500-2000;IHC-p 1:50-300
Immunogen	The antiserum was produced against synthesized peptide derived from human KAL1. AA range:151-200
Specificity	KALIG-1 Polyclonal Antibody detects endogenous levels of KALIG-1 protein.
Formulation	Liquid in PBS containing 50% glycerol, 0.5% BSA and 0.02% sodium azide.
Storage	Store at -20°C. Avoid repeated freeze-thaw cycles.
Protein Name	Anosmin-1
Gene Name	KAL1
Cellular localization	Cell membrane ; Peripheral membrane protein . Secreted . Proteolytic cleavage may release it from the cell surface into the extracellular space.
Purification	The antibody was affinity-purified from rabbit antiserum by affinity-chromatography using epitope-specific immunogen.
Clonality	Polyclonal
Concentration	1 mg/ml
Observed band	76kD
Human Gene ID	3730
Human Swiss-Prot Number	P23352
Alternative Names	KAL1; ADMLX; KAL; KALIG1; Anosmin-1; Adhesion molecule-like X-linked; Kallmann syndrome protein
Background	Mutations in this gene cause the X-linked Kallmann syndrome. The encoded protein is similar in sequence to proteins known to function in neural cell adhesion and axonal migration. In addition, this cell surface protein is N-glycosylated and may have

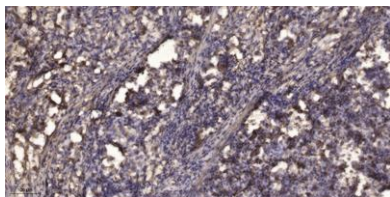
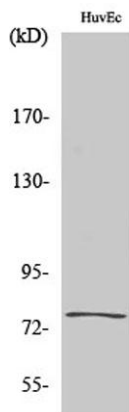




ELK Biotechnology

anti-protease activity. [provided by RefSeq, Jul 2008],

Western Blot analysis of various cells using KALIG-1 Polyclonal Antibody



Immunohistochemical analysis of paraffin-embedded human Squamous cell carcinoma of lung. 1, Antibody was diluted at 1:200(4° overnight). 2, Tris-EDTA,pH9.0 was used for antigen retrieval. 3,Secondary antibody was diluted at 1:200(room temperature, 45min).



+86-27-59760950

ELKbio@ELKbiotech.com

www.elkbiotech.com

23-2, No.388 Gaoxin 2nd Road,Wuhan East Lake Hi-tech Development Zone, Hubei , P.R.C