



JIK rabbit pAb

Cat No.:ES2658

For research use only

Overview

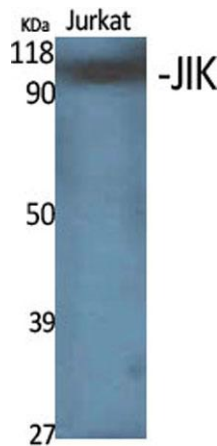
Product Name	JIK rabbit pAb
Host species	Rabbit
Applications	WB;ELISA;IHC
Species Cross-Reactivity	Human;Mouse;Rat
Recommended dilutions	WB 1:500-2000;IHC-p 1:50-300; ELISA 2000-20000
Immunogen	The antiserum was produced against synthesized peptide derived from human TAOK3. AA range:531-580
Specificity	JIK Polyclonal Antibody detects endogenous levels of JIK protein.
Formulation	Liquid in PBS containing 50% glycerol, 0.5% BSA and 0.02% sodium azide.
Storage	Store at -20°C. Avoid repeated freeze-thaw cycles.
Protein Name	Serine/threonine-protein kinase TAO3
Gene Name	TAOK3
Cellular localization	Cytoplasm . Cell membrane ; Peripheral membrane protein . Also localized to the peripheral cell membrane.
Purification	The antibody was affinity-purified from rabbit antiserum by affinity-chromatography using epitope-specific immunogen.
Clonality	Polyclonal
Concentration	1 mg/ml
Observed band	110kD
Human Gene ID	51347
Human Swiss-Prot Number	Q9H2K8
Alternative Names	TAOK3; DPK; JIK; KDS; MAP3K18; Serine/threonine-protein kinase TAO3; Cutaneous T-cell lymphoma-associated antigen HD-CL-09; CTCL-associated antigen HD-CL-09; Dendritic cell-derived protein kinase; JNK/SAPK-inhibitory kinase; Jun kinase-inhi catalytic activity:ATP + a protein = ADP + a

Background

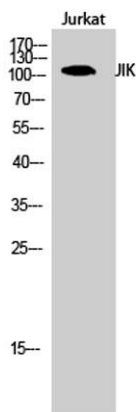




phosphoprotein.,function:Inhibits the basal activity of Jun kinase. Negatively regulated by epidermal growth factor (EGF). When overexpressed, may activate ERK1/ERK2 and JNK/SAPK.,PTM:Autophosphorylated. Phosphorylated upon DNA damage, probably by ATM or ATR.,similarity:Belongs to the protein kinase superfamily. STE Ser/Thr protein kinase family. STE20 subfamily.,similarity:Contains 1 protein kinase domain.,subcellular location:Also localized to the peripheral cell membrane.,subunit:Self-associates.,tissue specificity:Ubiquitously expressed at a low level, and highly expressed in peripheral blood leukocytes (PBLs), thymus, spleen, kidney, skeletal muscle, heart and liver.,



Western Blot analysis of various cells using JIK Polyclonal Antibody

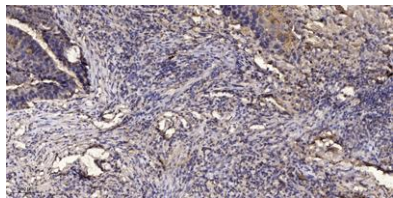


Western Blot analysis of Jurkat cells using JIK Polyclonal Antibody





ELK Biotechnology



Immunohistochemical analysis of paraffin-embedded human Squamous cell carcinoma of lung. 1, Antibody was diluted at 1:200(4° overnight). 2, Tris-EDTA,pH9.0 was used for antigen retrieval. 3,Secondary antibody was diluted at 1:200(room temperature, 45min).



+86-27-59760950

ELKbio@ELKbiotech.com

www.elkbiotech.com

23-2, No.388 Gaoxin 2nd Road,Wuhan East Lake Hi-tech Development Zone, Hubei , P.R.C