



# IRX2 rabbit pAb

Cat No.:ES2650

For research use only

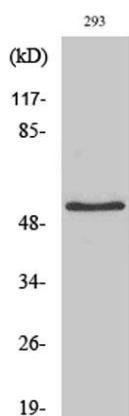
## Overview

<b>Product Name</b>	IRX2 rabbit pAb
<b>Host species</b>	Rabbit
<b>Applications</b>	WB;IHC;IF;ELISA
<b>Species Cross-Reactivity</b>	Human;Rat;Mouse;
<b>Recommended dilutions</b>	Western Blot: 1/500 - 1/2000. Immunohistochemistry: 1/100 - 1/300. Immunofluorescence: 1/200 - 1/1000. ELISA: 1/20000. Not yet tested in other applications.
<b>Immunogen</b>	The antiserum was produced against synthesized peptide derived from human IRX2. AA range:231-280
<b>Specificity</b>	IRX2 Polyclonal Antibody detects endogenous levels of IRX2 protein.
<b>Formulation</b>	Liquid in PBS containing 50% glycerol, 0.5% BSA and 0.02% sodium azide.
<b>Storage</b>	Store at -20°C. Avoid repeated freeze-thaw cycles.
<b>Protein Name</b>	Iroquois-class homeodomain protein IRX-2
<b>Gene Name</b>	IRX2
<b>Cellular localization</b>	Nucleus .
<b>Purification</b>	The antibody was affinity-purified from rabbit antiserum by affinity-chromatography using epitope-specific immunogen.
<b>Clonality</b>	Polyclonal
<b>Concentration</b>	1 mg/ml
<b>Observed band</b>	50kD
<b>Human Gene ID</b>	153572
<b>Human Swiss-Prot Number</b>	Q9BZ11
<b>Alternative Names</b>	IRX2; IRXA2; Iroquois-class homeodomain protein IRX-2; Homeodomain protein IRXA2; Iroquois homeobox protein 2
<b>Background</b>	IRX2 is a member of the Iroquois homeobox gene family. Members of this family appear to play multiple roles during pattern formation of



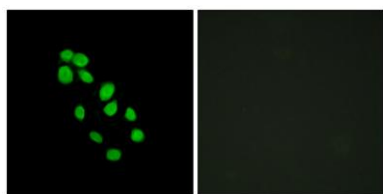


vertebrate embryos.[supplied by OMIM, Apr 2004],

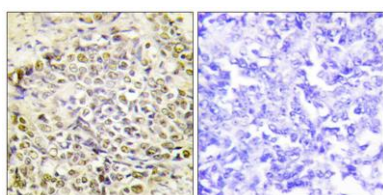


Western Blot analysis of various cells using IRX2 Polyclonal Antibody cells nucleus extracted by Minute TM Cytoplasmic and Nuclear Fractionation kit (SC-003, Inventbiotech, MN, USA).

Immunofluorescence analysis of HepG2 cells, using IRX2 Antibody. The picture on the right is blocked with the synthesized peptide.

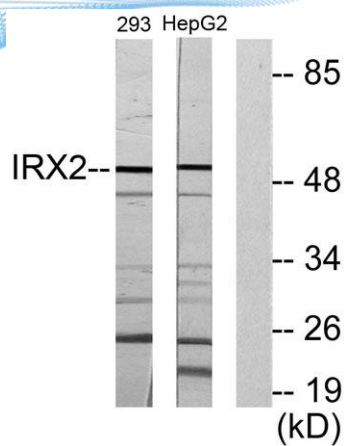


Immunohistochemistry analysis of paraffin-embedded human lung carcinoma tissue, using IRX2 Antibody. The picture on the right is blocked with the synthesized peptide.





**ELK Biotechnology**



Western blot analysis of lysates from 293 and HepG2 cells, using IRX2 Antibody. The lane on the right is blocked with the synthesized peptide.



+86-27-59760950

[ELKbio@ELKbiotech.com](mailto:ELKbio@ELKbiotech.com)

[www.elkbiotech.com](http://www.elkbiotech.com)

23-2, No.388 Gaoxin 2nd Road, Wuhan East Lake Hi-tech Development Zone, Hubei, P.R.C