



# IQGAP3 rabbit pAb

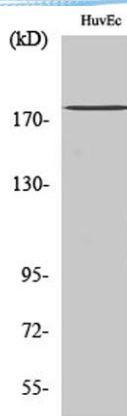
Cat No.:ES2640

For research use only

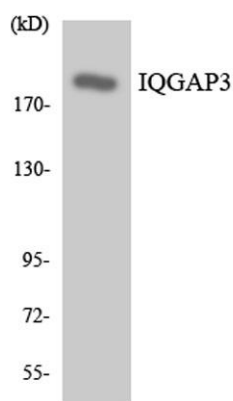
## Overview

<b>Product Name</b>	IQGAP3 rabbit pAb
<b>Host species</b>	Rabbit
<b>Applications</b>	WB;ELISA;IHC
<b>Species Cross-Reactivity</b>	Human;Mouse;Rat
<b>Recommended dilutions</b>	WB 1:500-2000;IHC-p 1:50-300; ELISA 2000-20000
<b>Immunogen</b>	The antiserum was produced against synthesized peptide derived from human IQGAP3. AA range:107-156
<b>Specificity</b>	IQGAP3 Polyclonal Antibody detects endogenous levels of IQGAP3 protein.
<b>Formulation</b>	Liquid in PBS containing 50% glycerol, 0.5% BSA and 0.02% sodium azide.
<b>Storage</b>	Store at -20°C. Avoid repeated freeze-thaw cycles.
<b>Protein Name</b>	Ras GTPase-activating-like protein IQGAP3
<b>Gene Name</b>	IQGAP3
<b>Cellular localization</b>	cytosol,cell-cell junction,lateral plasma membrane,
<b>Purification</b>	The antibody was affinity-purified from rabbit antiserum by affinity-chromatography using epitope-specific immunogen.
<b>Clonality</b>	Polyclonal
<b>Concentration</b>	1 mg/ml
<b>Observed band</b>	180kD
<b>Human Gene ID</b>	128239
<b>Human Swiss-Prot Number</b>	Q86VI3
<b>Alternative Names</b>	IQGAP3; Ras GTPase-activating-like protein IQGAP3
<b>Background</b>	similarity:Contains 1 CH (calponin-homology) domain.,similarity:Contains 1 Ras-GAP domain.,similarity:Contains 4 IQ domains.,

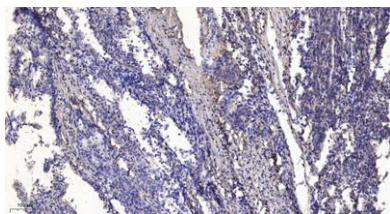




Western Blot analysis of various cells using IQGAP3  
Polyclonal Antibody diluted at 1:1000



Western blot analysis of the lysates from 293 cells using  
IQGAP3 antibody.



Immunohistochemical analysis of paraffin-embedded  
human Gastric adenocarcinoma. 1, Antibody was diluted  
at 1:200(4° overnight). 2, Tris-EDTA,pH9.0 was used for  
antigen retrieval. 3,Secondary antibody was diluted at  
1:200(room temperature, 45min).

