



# Integrin $\alpha$ 3 rabbit pAb

Cat No.:ES2628

For research use only

## Overview

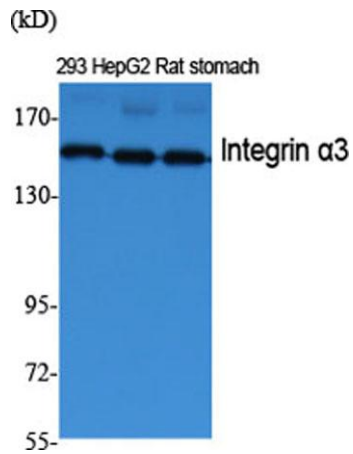
<b>Product Name</b>	Integrin $\alpha$ 3 rabbit pAb
<b>Host species</b>	Rabbit
<b>Applications</b>	WB;ELISA
<b>Species Cross-Reactivity</b>	Human;Mouse;Rat
<b>Recommended dilutions</b>	Western Blot: 1/500 - 1/2000. ELISA: 1/40000. Not yet tested in other applications.
<b>Immunogen</b>	The antiserum was produced against synthesized peptide derived from human Integrin alpha3. AA range:482-531
<b>Specificity</b>	Integrin $\alpha$ 3 Polyclonal Antibody detects endogenous levels of Integrin $\alpha$ 3 protein.
<b>Formulation</b>	Liquid in PBS containing 50% glycerol, 0.5% BSA and 0.02% sodium azide.
<b>Storage</b>	Store at $-20^{\circ}\text{C}$ . Avoid repeated freeze-thaw cycles.
<b>Protein Name</b>	Integrin alpha-3
<b>Gene Name</b>	ITGA3
<b>Cellular localization</b>	Cell membrane ; Single-pass type I membrane protein . Cell membrane ; Lipid-anchor . Cell projection, invadopodium membrane ; Single-pass type I membrane protein . Cell projection, filopodium membrane ; Single-pass type I membrane protein . Enriched prefe
<b>Purification</b>	The antibody was affinity-purified from rabbit antiserum by affinity-chromatography using epitope-specific immunogen.
<b>Clonality</b>	Polyclonal
<b>Concentration</b>	1 mg/ml
<b>Observed band</b>	150kD
<b>Human Gene ID</b>	3675
<b>Human Swiss-Prot Number</b>	P26006
<b>Alternative Names</b>	ITGA3; MSK18; Integrin alpha-3; CD49 antigen-like family member C; FRP-2; Galactoprotein B3; GAPB3; VLA-3 subunit alpha; CD antigen CD49c



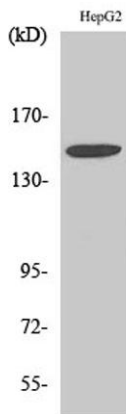


## Background

integrin subunit alpha 3(ITGA3) Homo sapiens  
The gene encodes a member of the integrin alpha chain family of proteins. Integrins are heterodimeric integral membrane proteins composed of an alpha chain and a beta chain that function as cell surface adhesion molecules. The encoded preproprotein is proteolytically processed to generate light and heavy chains that comprise the alpha 3 subunit. This subunit joins with a beta 1 subunit to form an integrin that interacts with extracellular matrix proteins including members of the laminin family. Expression of this gene may be correlated with breast cancer metastasis. [provided by RefSeq, Oct 2015],



Western Blot analysis of various cells using Integrin  $\alpha$ 3  
Polyclonal Antibody diluted at 1:2000



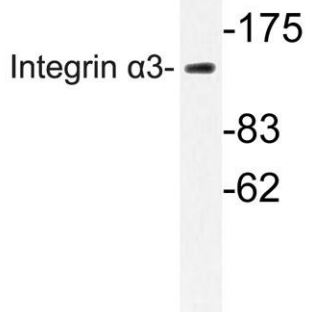
Western Blot analysis of HepG2 cells using Integrin  $\alpha$ 3  
Polyclonal Antibody diluted at 1:2000





**ELK Biotechnology**

Western blot analysis of lysate from HepG2 cells, using Integrin  $\alpha 3$  antibody.



+86-27-59760950

[ELKbio@ELKbiotech.com](mailto:ELKbio@ELKbiotech.com)

[www.elkbiotech.com](http://www.elkbiotech.com)

23-2, No.388 Gaoxin 2nd Road, Wuhan East Lake Hi-tech Development Zone, Hubei, P.R.C.