



INSL4 rabbit pAb

Cat No.:ES2624

For research use only

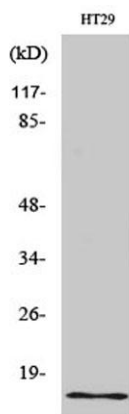
Overview

Product Name	INSL4 rabbit pAb
Host species	Rabbit
Applications	WB;IHC;IF;ELISA
Species Cross-Reactivity	Human;Rat;Mouse;
Recommended dilutions	Western Blot: 1/500 - 1/2000. Immunohistochemistry: 1/100 - 1/300. Immunofluorescence: 1/200 - 1/1000. ELISA: 1/20000. Not yet tested in other applications.
Immunogen	The antiserum was produced against synthesized peptide derived from human INSL4. AA range:41-90
Specificity	INSL4 Polyclonal Antibody detects endogenous levels of INSL4 protein.
Formulation	Liquid in PBS containing 50% glycerol, 0.5% BSA and 0.02% sodium azide.
Storage	Store at -20°C. Avoid repeated freeze-thaw cycles.
Protein Name	Early placenta insulin-like peptide
Gene Name	INSL4
Cellular localization	Secreted .
Purification	The antibody was affinity-purified from rabbit antiserum by affinity-chromatography using epitope-specific immunogen.
Clonality	Polyclonal
Concentration	1 mg/ml
Observed band	19kD
Human Gene ID	3641
Human Swiss-Prot Number	Q14641
Alternative Names	INSL4; Early placenta insulin-like peptide; EPIL; Insulin-like peptide 4; Placentin
Background	INSL4 encodes the insulin-like 4 protein, a member of the insulin superfamily. INSL4 encodes a precursor that undergoes post-translational cleavage to produce 3 polypeptide chains, A-C, that form tertiary structures composed of either all three



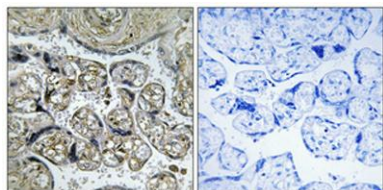


chains, or just the A and B chains. Expression of INSL4 products occurs within the early placental cytotrophoblast and syncytiotrophoblast. [provided by RefSeq, Jul 2008],

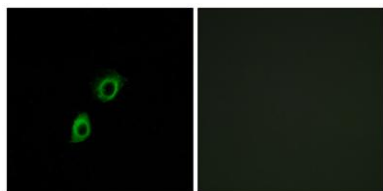


Western Blot analysis of various cells using INSL4 Polyclonal Antibody

Immunohistochemical analysis of paraffin-embedded Human placenta. Antibody was diluted at 1:100(4° overnight). High-pressure and temperature Tris-EDTA,pH8.0 was used for antigen retrieval. Negative contrl (right) obtained from antibody was pre-absorbed by immunogen peptide.

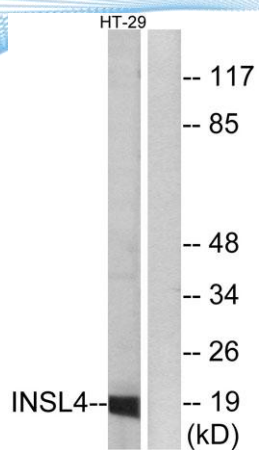


Immunofluorescence analysis of A549 cells, using INSL4 Antibody. The picture on the right is blocked with the synthesized peptide.





ELK Biotechnology



Western blot analysis of lysates from HT-29 cells, using INSL4 Antibody. The lane on the right is blocked with the synthesized peptide.



+86-27-59760950

ELKbio@ELKbiotech.com

www.elkbiotech.com

23-2, No.388 Gaoxin 2nd Road,Wuhan East Lake Hi-tech Development Zone, Hubei , P.R.C