



Inhibin β -C rabbit pAb

Cat No.:ES2623

For research use only

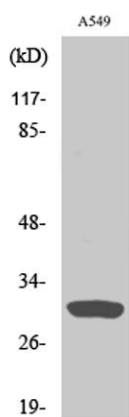
Overview

Product Name	Inhibin β -C rabbit pAb
Host species	Rabbit
Applications	WB;IHC;IF;ELISA
Species Cross-Reactivity	Human;Rat;Mouse;
Recommended dilutions	Western Blot: 1/500 - 1/2000. Immunohistochemistry: 1/100 - 1/300. ELISA: 1/5000. Not yet tested in other applications.
Immunogen	The antiserum was produced against synthesized peptide derived from human Inhibin beta-C. AA range:80-129
Specificity	Inhibin β -C Polyclonal Antibody detects endogenous levels of Inhibin β -C protein.
Formulation	Liquid in PBS containing 50% glycerol, 0.5% BSA and 0.02% sodium azide.
Storage	Store at -20°C. Avoid repeated freeze-thaw cycles.
Protein Name	Inhibin beta C chain
Gene Name	INHBC
Cellular localization	Secreted .
Purification	The antibody was affinity-purified from rabbit antiserum by affinity-chromatography using epitope-specific immunogen.
Clonality	Polyclonal
Concentration	1 mg/ml
Observed band	30kD
Human Gene ID	3626
Human Swiss-Prot Number	P55103
Alternative Names	INHBC; Inhibin beta C chain; Activin beta-C chain
Background	This gene encodes a member of the TGF-beta (transforming growth factor-beta) superfamily of proteins. The encoded preproprotein is proteolytically processed to generate a subunit of homodimeric and heterodimeric activin complexes. The heterodimeric complex may function in the



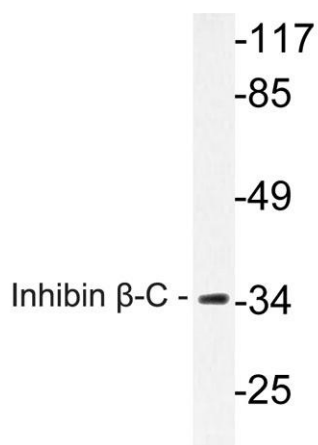
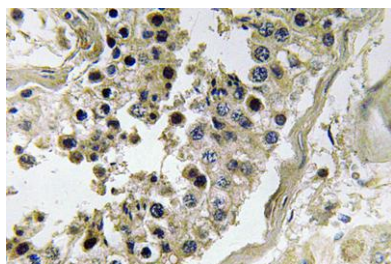


inhibition of activin A signaling. Transgenic mice overexpressing this gene exhibit defects in testis, liver and prostate. [provided by RefSeq, Aug 2016],



Western Blot analysis of various cells using Inhibin β -C Polyclonal Antibody

Immunohistochemistry analysis of Inhibin β -C antibody in paraffin-embedded human testis tissue.



Western blot analysis of lysate from A549 cells, using Inhibin β -C antibody.

