



# IL-7R rabbit pAb

Cat No.:ES2619

For research use only

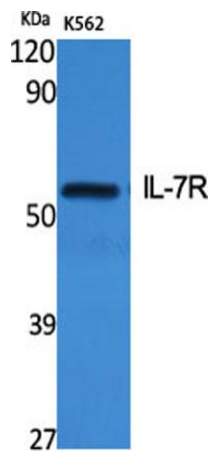
## Overview

<b>Product Name</b>	IL-7R rabbit pAb
<b>Host species</b>	Rabbit
<b>Applications</b>	WB;ELISA
<b>Species Cross-Reactivity</b>	Human;Mouse;Monkey
<b>Recommended dilutions</b>	Western Blot: 1/500 - 1/2000. ELISA: 1/40000. Not yet tested in other applications.
<b>Immunogen</b>	The antiserum was produced against synthesized peptide derived from human IL-7R/CD127. AA range:410-459
<b>Specificity</b>	IL-7R Polyclonal Antibody detects endogenous levels of IL-7R protein.
<b>Formulation</b>	Liquid in PBS containing 50% glycerol, 0.5% BSA and 0.02% sodium azide.
<b>Storage</b>	Store at -20°C. Avoid repeated freeze-thaw cycles.
<b>Protein Name</b>	Interleukin-7 receptor subunit alpha
<b>Gene Name</b>	IL7R
<b>Cellular localization</b>	[Isoform 1]: Cell membrane; Single-pass type I membrane protein.; [Isoform 3]: Cell membrane; Single-pass type I membrane protein.; [Isoform 4]: Secreted.
<b>Purification</b>	The antibody was affinity-purified from rabbit antiserum by affinity-chromatography using epitope-specific immunogen.
<b>Clonality</b>	Polyclonal
<b>Concentration</b>	1 mg/ml
<b>Observed band</b>	52 60kD
<b>Human Gene ID</b>	3575
<b>Human Swiss-Prot Number</b>	P16871
<b>Alternative Names</b>	IL7R; Interleukin-7 receptor subunit alpha; IL-7 receptor subunit alpha; IL-7R subunit alpha; IL-7R-alpha; IL-7RA; CDw127; CD antigen CD127
<b>Background</b>	The protein encoded by this gene is a receptor for interleukin 7 (IL7). The function of this receptor

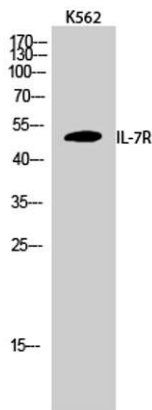




requires the interleukin 2 receptor, gamma chain (IL2RG), which is a common gamma chain shared by the receptors of various cytokines, including interleukins 2, 4, 7, 9, and 15. This protein has been shown to play a critical role in V(D)J recombination during lymphocyte development. Defects in this gene may be associated with severe combined immunodeficiency (SCID). Alternatively spliced transcript variants have been found. [provided by RefSeq, Dec 2015],

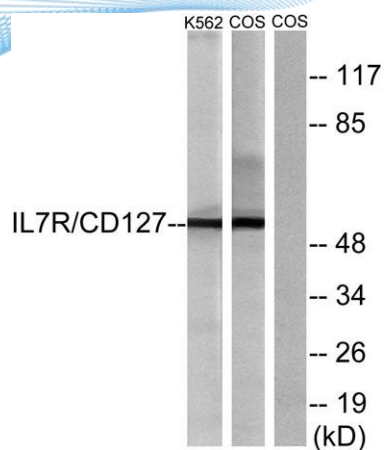


Western Blot analysis of various cells using IL-7R Polyclonal Antibody

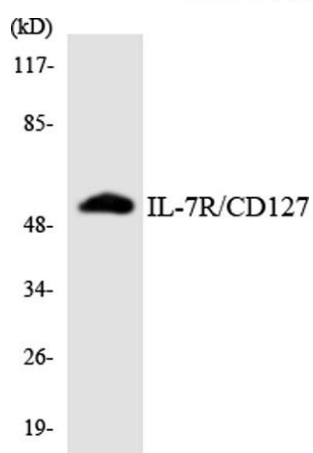


Western Blot analysis of K562 cells using IL-7R Polyclonal Antibody





Western blot analysis of lysates from K562 and COS cells, treated with insulin 0.01U/ml 15', using IL-7R/CD127 Antibody. The lane on the right is blocked with the synthesized peptide.



Western blot analysis of the lysates from Jurkat cells using IL-7R/CD127 antibody.

