



IKK γ rabbit pAb

Cat No.:ES2605

For research use only

Overview

Product Name	IKK γ rabbit pAb
Host species	Rabbit
Applications	WB;IHC;IF;ELISA
Species Cross-Reactivity	Human;Rat;Mouse;
Recommended dilutions	Western Blot: 1/500 - 1/2000. Immunohistochemistry: 1/100 - 1/300. Immunofluorescence: 1/200 - 1/1000. ELISA: 1/20000. Not yet tested in other applications.
Immunogen	The antiserum was produced against synthesized peptide derived from human IKK-gamma. AA range:51-100
Specificity	IKK γ Polyclonal Antibody detects endogenous levels of IKK γ protein.
Formulation	Liquid in PBS containing 50% glycerol, 0.5% BSA and 0.02% sodium azide.
Storage	Store at -20°C. Avoid repeated freeze-thaw cycles.
Protein Name	NF-kappa-B essential modulator
Gene Name	IKBK γ
Cellular localization	Cytoplasm . Nucleus . Sumoylated NEMO accumulates in the nucleus in response to genotoxic stress. .
Purification	The antibody was affinity-purified from rabbit antiserum by affinity-chromatography using epitope-specific immunogen.
Clonality	Polyclonal
Concentration	1 mg/ml
Observed band	43kD
Human Gene ID	8517
Human Swiss-Prot Number	Q9Y6K9
Alternative Names	IKBK γ ; FIP3; NEMO; NF-kappa-B essential modulator; NEMO; FIP-3; I κ B kinase-associated protein 1; IKKAP1; Inhibitor of nuclear factor kappa-B kinase subunit gamma; I-kappa-B kinase



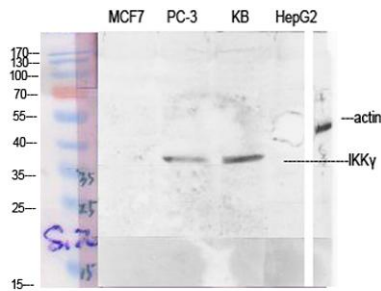


Background

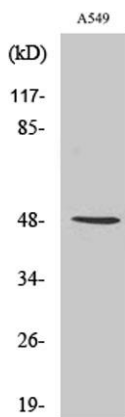
subunit gamma; IKK-gamma; IKKG; Ikb kinase subunit gamma; NF

This gene encodes the regulatory subunit of the inhibitor of kappaB kinase (IKK) complex, which activates NF-kappaB resulting in activation of genes involved in inflammation, immunity, cell survival, and other pathways. Mutations in this gene result in incontinentia pigmenti, hypohidrotic ectodermal dysplasia, and several other types of immunodeficiencies. A pseudogene highly similar to this locus is located in an adjacent region of the X chromosome. [provided by RefSeq, Mar 2016],

Western Blot analysis of various cells using IKK γ Polyclonal Antibody diluted at 1:1000



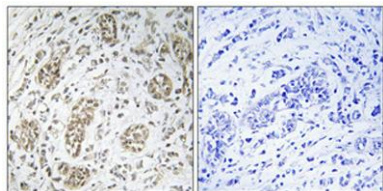
Western Blot analysis of RAW264.7 cells using IKK γ Polyclonal Antibody diluted at 1:1000



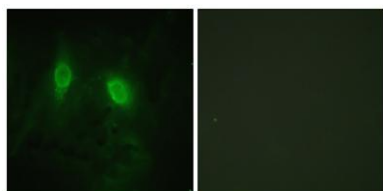


ELK Biotechnology

Immunohistochemical analysis of paraffin-embedded Human breast cancer. Antibody was diluted at 1:100(4° overnight). High-pressure and temperature Tris-EDTA,pH8.0 was used for antigen retrieval. Negative contrl (right) obtained from antibody was pre-absor



Immunofluorescence analysis of HeLa cells, using IKK-gamma Antibody. The picture on the right is blocked with the synthesized peptide.



+86-27-59760950

ELKbio@ELKbiotech.com

www.elkbiotech.com

23-2, No.388 Gaoxin 2nd Road,Wuhan East Lake Hi-tech Development Zone, Hubei , P.R.C