



# IKK $\alpha$ rabbit pAb

Cat No.:ES2600

For research use only

## Overview

<b>Product Name</b>	IKK $\alpha$ rabbit pAb
<b>Host species</b>	Rabbit
<b>Applications</b>	WB;IHC;IF;ELISA
<b>Species Cross-Reactivity</b>	Human;Mouse;Rat
<b>Recommended dilutions</b>	Western Blot: 1/500 - 1/2000. Immunohistochemistry: 1/100 - 1/300. ELISA: 1/10000. Not yet tested in other applications.
<b>Immunogen</b>	The antiserum was produced against synthesized peptide derived from human IKK-alpha. AA range:15-64
<b>Specificity</b>	IKK $\alpha$ Polyclonal Antibody detects endogenous levels of IKK $\alpha$ protein.
<b>Formulation</b>	Liquid in PBS containing 50% glycerol, 0.5% BSA and 0.02% sodium azide.
<b>Storage</b>	Store at -20°C. Avoid repeated freeze-thaw cycles.
<b>Protein Name</b>	Inhibitor of nuclear factor kappa-B kinase subunit alpha
<b>Gene Name</b>	CHUK
<b>Cellular localization</b>	Cytoplasm . Nucleus . Shuttles between the cytoplasm and the nucleus.
<b>Purification</b>	The antibody was affinity-purified from rabbit antiserum by affinity-chromatography using epitope-specific immunogen.
<b>Clonality</b>	Polyclonal
<b>Concentration</b>	1 mg/ml
<b>Observed band</b>	85kD
<b>Human Gene ID</b>	1147
<b>Human Swiss-Prot Number</b>	O15111
<b>Alternative Names</b>	CHUK; IKKA; TCF16; Inhibitor of nuclear factor kappa-B kinase subunit alpha; I-kappa-B kinase alpha; IKK-A; IKK-alpha; IkbKA; IkappaB kinase; Conserved helix-loop-helix ubiquitous kinase; I-kappa-B kinase 1; IKK1; Nuclear factor NF-kappa-B

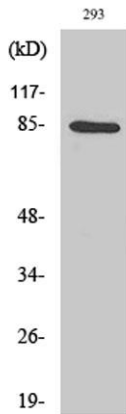
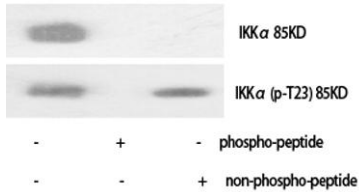




## Background

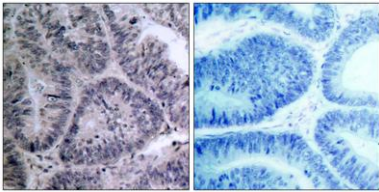
This gene encodes a member of the serine/threonine protein kinase family. The encoded protein, a component of a cytokine-activated protein complex that is an inhibitor of the essential transcription factor NF-kappa-B complex, phosphorylates sites that trigger the degradation of the inhibitor via the ubiquination pathway, thereby activating the transcription factor. [provided by RefSeq, Jul 2008],

Western Blot analysis of various cells using IKK $\alpha$  Polyclonal Antibody diluted at 1:1000



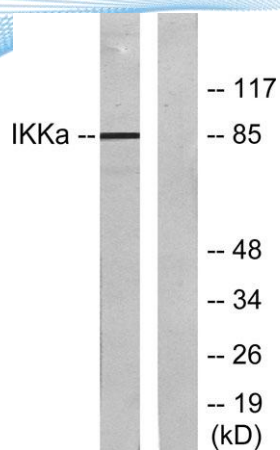
Western Blot analysis of 293 cells using IKK $\alpha$  Polyclonal Antibody diluted at 1:1000

Immunohistochemistry analysis of paraffin-embedded human colon carcinoma tissue, using IKK-alpha Antibody. The picture on the right is blocked with the synthesized peptide.





**ELK Biotechnology**



Western blot analysis of lysates from 293 cells, treated with EGF, using IKK-alpha Antibody. The lane on the right is blocked with the synthesized peptide.



+86-27-59760950

[ELKbio@ELKbiotech.com](mailto:ELKbio@ELKbiotech.com)

[www.elkbiotech.com](http://www.elkbiotech.com)

23-2, No.388 Gaoxin 2nd Road,Wuhan East Lake Hi-tech Development Zone, Hubei , P.R.C